

TRANE AUSTRALIA

TEXT: JOHN MORETON PHOTOGRAPHY: ANDY STEVENS

→ **30 THE BOND ACHIEVED ITS AUSTRALIAN BUILDING GREENHOUSE RATING OF FIVE STARS**, due in part to the innovative use of chilled beam technology. The cost savings and efficiencies of this technology along with other technologies reduced the buildings greenhouse gas emissions by up to 30% in comparison to other similar buildings.

Although new to Australia, chilled beam technology is well known in Europe and, using their international leverage, Lend Lease drew on the expertise of their European colleagues to incorporate chilled beam air conditioning into the development at 30 The Bond.

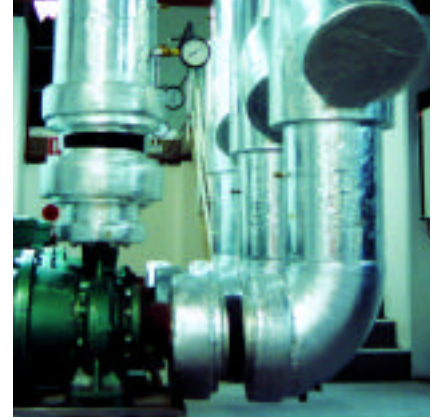
The central chilled water plant was supplied by Trane Australia. Trane Australia is a leading global provider of Heating, Ventilation and Air Conditioning systems (HVAC) and services since 1913. Its offerings include energy efficient heating, ventilation and air conditioning products, building automation systems, maintenance services and parts. Trane Australia has an extensive national presence, which includes sales and service offices located throughout Australia and New Zealand with 447 employees.

Trane's expertise in the HVAC field was of great importance in the selection and commissioning of suitable Machines that would operate to a high level of efficiency and provide the required amount of chilled water to the system. Trane's involvement in the project at 30 The Bond, required the sourcing of appropriate machines and the commissioning of new high efficiency water-cooled helical rotary chillers.

These new Helical Rotary Chillers were manufactured by Trane at their manufacturing plant in Pueblo Colorado to meet the specific requirements for effective operation of the chilled beam air conditioning system at 30 The Bond.

Once installed the Helical Rotary Chillers form the heart of the cooling system, the central chilled water plant that provides chilled water to the cooling beams on each level. Three chillers each with a nominal capacity of 850kw were manufactured, shipped and installed to provide the required cooling capacity and meet the high operating efficiency requirements identified by Trane.

The sourcing, manufacture and provision of these chillers by Trane ensured the chilled beam technology that is integral to the development at 30 The Bond operates to the highest standards of efficiency and reliability.



TRANE AUSTRALIA
6-8 LYON PARK ROAD
NORTH RYDE, NSW 2113
PH: 02 9878 8055
FAX: 02 9878 8293
www.trane.com.au

