

A DISTINGUISHED LIFESTYLE

DEVELOPER : Geocon and Zapari
MAIN CONSTRUCTION COMPANY : Geocon
ARCHITECT : Cox Architecture
CONSTRUCTION VALUE : \$120 million



Grand Central Towers is an incredible development comprising two residential towers of 18 and 26-storeys containing over 400 luxurious apartments. Inclusive of ground floor retail, lobby, and service area, the development boasts an infinity pool, observation decks, gym, lounge, library, and rooftop retreat.

The Canberra skyline and built environment has again been enhanced with the construction of Grand Central Towers, a joint venture development by Geocon and Zapari. The twin towers of 26-storeys and 18-storeys make an impressively elegant statement in the revitalised Woden Town Centre in Canberra's south.

Grand Central Towers is one of the biggest developments in Woden and provides a total of 430 residential apartments and 11 commercial spaces. The premium development has been architecturally designed to combine exceptional facilities with stylish finishes, taking inspiration from New York's Grand Central Station. The foyer on the ground floor features an industrial brick façade that leads to the glass fronted residences and commercial tenancies above.

Apartments range in size from 46m² to 170m² and enjoy spectacular views of the surrounding Canberra landscape through floor to ceiling windows. All apartments have a luxe finish and buyers chose from three stylish colour schemes (Manhattan, Hamptons or Brooklyn), reflecting the New York connection.

The Towers had attracted strong interest from both downsizers and people wanting to upgrade their amenities and proximity to quality services. "A tranquil rooftop garden means residents can blend nature, light and open spaces or relax in the infinity pool," said Elliot Woods, Geocon's Head of Corporate Affairs. "A gym, lounge, bike hub and climate controlled wine cellar provide additional facilities for exercise, relaxation and socialising."

One of the many outstanding features of Grand Central Towers is that it offers unrivalled connectivity across the city. The development sits just steps away from the second stage of Canberra's light rail which has been approved for construction. The light rail will connect Woden to Capital Hill, the CBD and the wider suburban network, making travel for work, shopping and entertainment a simple and pleasurable process.

The new Canberra Hospital is also being built about 500m away and the Woden campus of the Canberra Institute of Technology has been approved for construction nearby.

The building programme proceeded to schedule despite the pandemic. "Fortunately the ACT had a better experience with COVID than some of the states so we kept the programme going throughout without one down day, with appropriate safety protocols instituted to protect our staff, contractors and suppliers," Elliot said.

Established in 2007, Geocon was founded by Managing Director, Nick Georgalis and has grown to be the largest residential builder and developer in the nation's capital. Initially building low rise residential dwellings and townhouses in Canberra's suburbs, Geocon has evolved their portfolio to encompass large scale, mixed use precincts featuring residential and commercial offerings, with an annual company turnover of \$500 million.

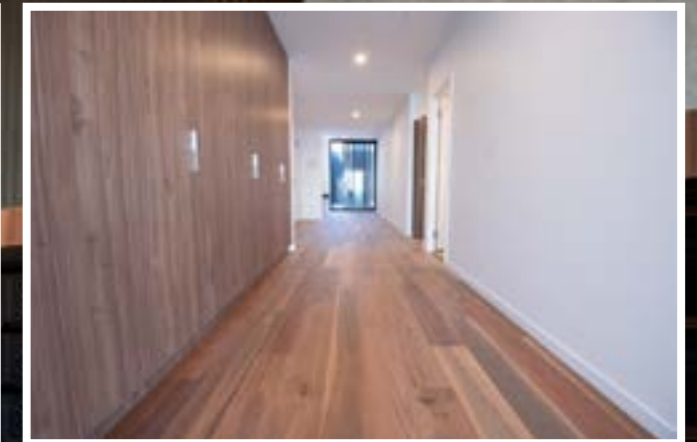
Geocon has a completely integrated inhouse approach which underpins their continuing success. The Geocon team handles all aspects of their projects from development site purchase, master planning, design and construction to real estate sales, financing, settlement and property management.

Geocon has recently completed High Society, a residential development in Belconnen, and are currently building Metropolis in the centre of Canberra and Aspen Village in Tuggeranong, continuing the transformation of the Canberra skyline into a cosmopolitan capital city.

For more information contact Geocon, Level 4, 16-18 Mort Street, Canberra ACT 2601, phone 02 6255 0430, email admin@geocon.com.au, website www.geocon.com.au

Below CPS Concrete Group completed extensive structural concrete and steel elements as well as the soft and hard landscaping.

Below Inline Floors ACT supplied and installed carpet, vinyl and timber flooring to Grand Central Towers.



CPS Concrete Group was contracted by Geocon on the groundbreaking Grand Central Towers project in the Australian Capital Territory's revitalised Woden Town Centre, and utilised all the companies in the group to complete the works.

"The structural steel elements were laid and tied by our CPS Steel Fixing team, the concrete was pumped and placed by the teams from CPS Concretors and CPS Pumping. CPS Landscaping completed the soft and hard landscaping, including the roof gardens on Levels 5, 14 and 16," explained Director, Tony Costanzo.

The CPS Concrete Group was involved onsite from March 2019 until November 2020. Tower pumps were supplied and installed within the core of each building, reaching the height of the 26-storey tower and the second 18-storey tower. The concrete tower pump required the operator at ground level to be in constant communication with the employees operating on the upper slabs. At any time, CPS Concrete Group had up to 50 employees across all companies working on different areas of the building.

CPS Concrete Group has established a leadership position in and around Canberra in concrete placing and finishing, post-tensioning

and landscaping specialising in large commercial builds. With over 40 years experience in the industry, CPS has the know how and skill sets to deliver major projects in a professional, safe manner and within time and budget parameters.

Recent CPS Group projects include the Stromlo Leisure Centre, Founders Lane Stages 1 and 2 in Civic, the Mulberry apartments in Dickson, Stage 2 of Goodwin Village in Farrer and the Batemans Bay Leisure Centre.

For more information contact CPS Concrete Group, 7/63-65 Wollongong Street, Fyshwick ACT 2609, phone 02 6228 1552, email tony@cpscg.com.au, website www.cpscg.com.au

Inline Floors ACT supplied and installed 30,000m² of floor coverings to the expansive Grand Central Towers.

Inline Floors ACT was engaged by Geocon to supply and install 30,000m² of floor coverings across 430 apartments and 11 commercial units at Grand Central Towers. The development offers Canberra's most exquisite new residential lifestyle.

Godfrey Hirst broadloom carpet was supplied and installed in three different colours. In addition, Inline Floors supplied and installed Signature vinyl planks in select common areas as well as engineered timber flooring in blackbutt and spotted gum within the three penthouses.

"Inline Floors ACT worked on this project for roughly six months utilising up to 30 of our regular installers. With less activity in Sydney construction as a result of COVID, we were able to utilise a number of our installers who work for our Sydney head office, Inline Floors," said Managing Director of Inline Floors ACT, Adam Williams.

The most challenging part of this project was installing dual bond carpet in corridors across 16-levels within a seven day programme.

This timeframe was achieved due to the great working relationship between Inline Floors and Geocon.

Inline Floors ACT is a professional commercial flooring business offering supply and installation services on an extensive range of floor coverings. Inline Floors ACT specialises in commercial projects including high rise residential buildings, medical facilities, government projects and office fitouts in Canberra and surrounding regions.

Inline Floors ACT is currently supplying and installing 5,000m² of sheet vinyl and carpet tiles in the Paediatric High Care Unit and Building 8 at Canberra Hospital.

For more information contact Inline Floors ACT, 5/31 Spongolite Street, Beard ACT 2620, phone 1300 707 035, email estimatingact@inlinefloors.com.au, website www.inlinefloors.com.au