

# A POSITIVE VERDICT



NSW Attorney General Gabrielle Upton officially opened the new \$90 million courthouse in Newcastle, the state's largest regional courthouse.

"Today marks an exciting new era for justice services in Newcastle and the Hunter region," Ms Upton said.

"The last time a new courthouse was opened in the CBD was the Church Street building on 29 February 1892 – almost 124 years ago."

"This new \$90 million, seven-storey complex is the most secure and technologically advanced courthouse in the state, setting a benchmark for how we deliver modern justice services in NSW."

The 12,000 square metre complex has 10 state-of-the-art courtrooms and two tribunal rooms for Local, District and Supreme Court hearings, including a courtroom large enough to cater for trials with eight defendants and up to 15 jury members. Video conferencing technology allows remote bail applications and testimonies from

off-site witnesses, and new extensive jury facilities include five deliberation rooms. Victims can give "in camera" evidence from one of six private and secure suites, and private rooms will reduce the stress of taking part in the court process for domestic violence victims and their families.

In addition, there is dedicated space for the NSW Office of the Director of Public Prosecutions, Legal Aid and Justice Health & Forensic Mental Health Network.

Closed Circuit Television cameras and an airport-style scanner and metal detector will be used to monitor the building, and 190 solar panels and energy efficient air conditioning will reduce its carbon footprint.

The development employed more than 1500 local tradespeople from Newcastle and surrounds over the past two years injecting millions into the area.

*For more information visit,* [www.justice.nsw.gov.au](http://www.justice.nsw.gov.au)



## A PICTURE PERFECT PROJECT

Raygun is a creative photographic services company specialising in photography, video, custom timelapse and long term timelapse for construction, mining, industrial, architectural, corporate and commercial businesses throughout Australia.

In 2013 Raygun was commissioned to provide photography and timelapse services for the NSW Department of Justice Newcastle Courthouse project by John Holland Group.

Drawing from extensive experience, Raygun used a timelapse system that would create a lasting record of the project build. Together with the timelapse video, photography of the construction was captured from the commencement of the project through to completion. The resulting video and image collection is a superb visual archive for the City of Newcastle and all involved in the project.

Garry Owens, owner of Raygun, boasts more than 25 years experience as a photographer. Based in the UK, he worked globally in advertising before moving to Australia in 2010, in 2012 he started Raygun Photography to enable him to work directly with industrial and construction clients.

The ability to work directly with his clients enables Garry to deliver a customized approach to his projects and produce creative and effective videos. Raygun is now a leading provider within this field.

After 3 years of monitoring, the timelapse for the courthouse is now completed and can be viewed at: <https://www.facebook.com/nswjustice/>

Raygun is about to embark on a project that will see them shoot a five minute video for Keller Australia, showing their operations throughout Australia. This is a fabulous opportunity and one which Raygun is looking forward to working on.

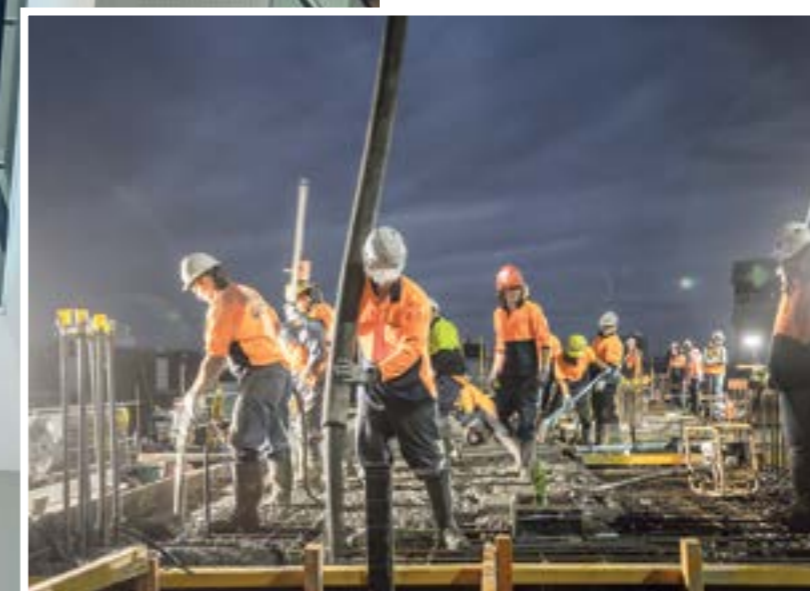
Additional to this project, Garry is working on a project for PowerWater NT on their Solar Setup Initiative to install six timelapse camera units at remote indigenous communities to record the solar installations. To supplement the timelapse footage Garry will also shoot a documentary video of the project.

Since the beginning of 2016, Raygun now has CASA certified aerial drone facilities. With this equipment Garry is planning to include aerial within his timelapse and video projects.

With great imagery, a vast technical knowledge, an easy to deal with personality and the knowledge that you will get a great result, Raygun is the perfect choice for creative photography and video production.

Raygun is fully compliant with OH&S and currently hold the Construction Induction and RISI certificates as well as having full Public Liability Insurance.

*For more information contact Raygun Photography, mobile 0420 804 047, email [garry@raygun.com.au](mailto:garry@raygun.com.au), website [www.raygun.com.au](http://www.raygun.com.au)*



# BREMIFIX

**ETA APPROVED | EU MANUFACTURED  
HIGH BOND STRENGTH | LOW CURING TIME**



Bremick has expanded its range of high quality construction products to include an innovative selection of high performance chemical injection products.

Consulting with engineers and contractors, Bremick's new range features larger cartridges, styrene free options, highest load performance and fast curing times resulting in faster, stronger and more reliable fixing for rebar, stud and other chemical anchoring applications.

These products have been developed and manufactured in our European labs to the highest international approvals and standards.

Bremick has a long history in the Australian Industrial and construction industries. This new range compliments an already superior range of construction products.

**Call 1800 252 922 for product enquiries**



Carbide Drill Bits | Sleeve Anchors | Chemical Injection Products | Masonry Anchors | Chemical Stud Fixing



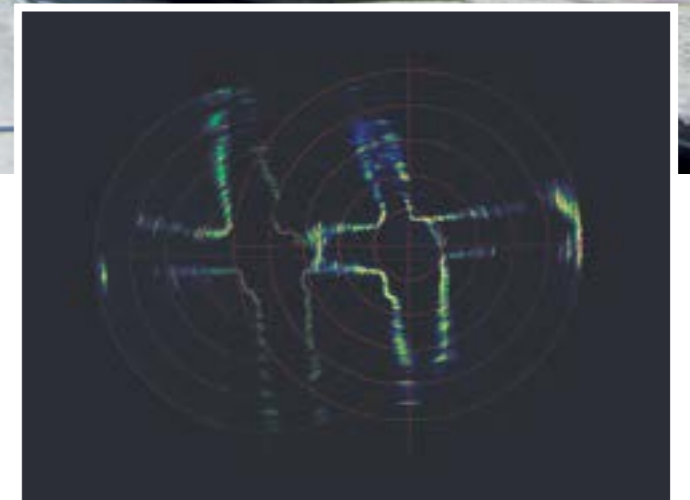
## TECHNICAL TEAMWORK

Douglas Partners were involved in the Newcastle Courthouse project from the outset, undertaking geotechnical investigations which included the intricate assessment of abandoned mine workings in two coals seams below the site.

Remedial grouting works were designed by Douglas Partners based on the results of detailed investigations along with their considerable experience with grouting of other mine workings in the Newcastle area. Grouting works were undertaken in the Dudley Seam, which is at a depth of about 24m, and the Borehole Seam, which is at a depth of about 75m. Douglas Partners was intimately involved during these grouting works, working closely with the grouting contractor at all times.

Douglas Partners also provided extensive construction advice to John Holland Group throughout the Newcastle Courthouse Development, including site and crane pad preparation, crane and scaffold foundation assessments, dewatering and piling advice.

One of the challenges associated with assessment and grouting of abandoned mine workings is the poor accuracy of the mine records and in the case of the shallower Dudley Seam, no detailed mine layouts were available at all.



Douglas Partners made use of their specialised down-hole equipment including oriented sonar and oriented pan/tilt CCTV equipment to provide an accurate plan of the workings, reducing the uncertainty with regard to grout quantities while allowing accurate targeting of grouting bores. Their observations during the works led to an enhanced understanding of the behaviour of grout flow in the Newcastle workings, which can be used to further refine future grouting projects.

The company provides a full range of geotechnical, contamination and groundwater services and their experienced staff pride themselves in providing Integrated Practical Solutions.

For more information contact Douglas Partners Pty Ltd, 15 Callistemon Close, Warabrook NSW 2310, phone 02 4960 9600, fax 02 4960 9601, email [newcastle@douglaspartners.com.au](mailto:newcastle@douglaspartners.com.au), website [www.douglaspartners.com.au](http://www.douglaspartners.com.au)