

BACK INTO THE SWIM OF THINGS

The Gippsland Regional Aquatic Centre saw the construction of an eight lane 50m competition pool, with 500 spectator seats, indoor water play zone, warm water therapy pool, learn to swim pool, sauna and steam room. Complete with a gym and group fitness rooms, two large water slides, wellness centre, a 25m outdoor pool, geothermal heating, café and retail space, the facility has been designed to support the regions range of health and wellbeing needs.

The Gippsland Regional Aquatic Centre (GRAC) is an exciting addition to the Latrobe Valley's community sports infrastructure and will provide a major new recreational facility in Traralgon, a home for major regional sporting events and an estimated 100+ new jobs.

The aquatic centre was designed to serve a wide range of community health and wellbeing needs. "We conceived the project to serve all members of our community regardless of age or ability," said Luke McGrath, Senior Project Manager for Latrobe City Council. "Facilities include a toddler pool, kids' play areas, learn to swim classes and waterslides, elite sport facilities, water polo, gym, leisure areas, rehabilitation and aquatherapy."

The focal point of the centre is an eight lane 50m indoor swimming pool with 500 spectator seats and space for further temporary seating along with a 25m outdoor pool, café and retail precinct.

"There has been a longstanding community desire for an indoor swimming centre in Traralgon for 30 years or more," Luke said. "There's been many attempts over the years but this time we made it happen."

One major catalyst for the project was a release of government funding for new sports and community infrastructure as part of a regional transition away from coal fired power. In addition to the aquatic centre, the investment benefited several other sports facilities in Gippsland including a new basketball stadium and centres of excellence for AFL and cricket.

The building is also designed with accessibility in mind, incorporating access ramps and hoists to ensure that the facilities can be enjoyed by all.

Community engagement was integral to the development of the aquatic centre. A project reference group was set up including a wide range of community stakeholders to provide input, advice and feedback into the design of the components of the project.

The latest state-of-the-art technology was included in the project. The centre's heating requirements are met by a deep bore geothermal system almost eliminating the centre's natural gas consumption with resulting savings to ratepayers. The Neptune Benson filtration system also saves energy with a 1-2 micron filtering ability achieving better water quality with less power needed for pumping.

The pool construction was also innovative. Myrtha stainless steel prefabricated pool shells were used instead of conventional in situ concrete. This allowed overall construction times to be sped up since there was no need for a 30 day concrete curing period.

To ensure the project gave the greatest economic advantage possible to the Latrobe Valley, a significant number of local companies and materials were used on the project including structural concrete and steel, plumbing, stormwater, security, public address systems, glazing, civil works, floor coverings and joinery.

"We had a great relationship with the main contractor ADCO," said Luke. "They understood the big picture and the need to use local people on the job wherever they could."

Many challenges had to be overcome to successfully deliver the project, starting with the remedial works required to decontaminate the site. After construction started works were impacted by smoke from the bushfires in early 2020 and then by the COVID-19 pandemic. "The pandemic restrictions had a big impact," explained Luke. "We kept the site open but bringing new workers to site was sometimes a challenge. It was all managed well to the credit of ADCO and their subcontractors."

The aquatic centre will be operated by the YMCA on behalf of Latrobe City Council. "All the initial feedback has been really positive," said Luke. "There is a real excitement in the community and everyone is eager to get in there and start using it!"

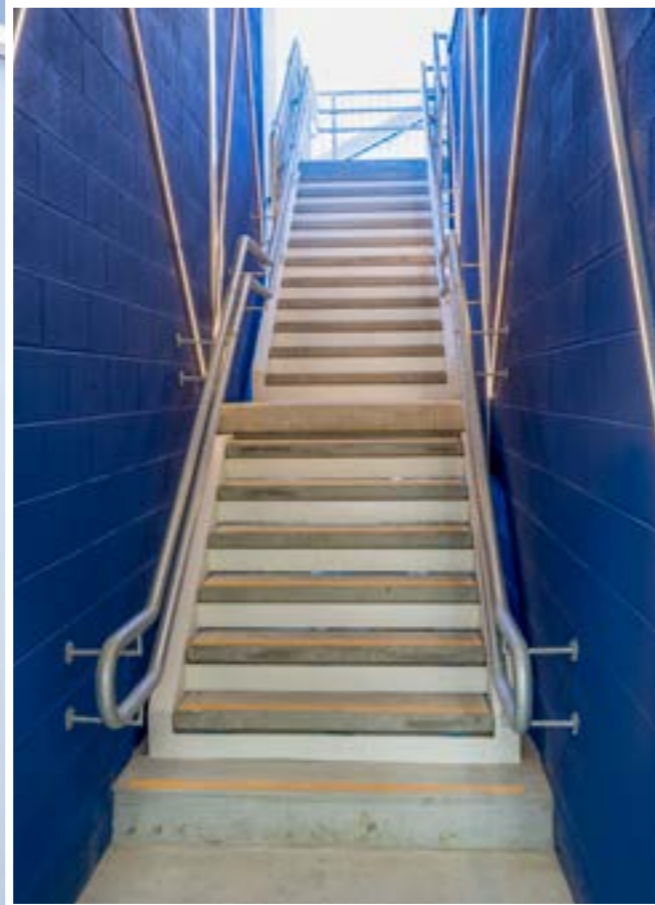
For more information contact Latrobe City Council, 141 Commercial Road, Morwell VIC 3840, phone 1300 367 700, email latrobe@latrobe.vic.gov.au, website www.latrobe.vic.gov.au



DEVELOPER : Latrobe City Council
MAIN CONSTRUCTION COMPANY : ADCO
ARCHITECT : Peddle Thorpe
ENGINEER : Bonacci Group
CONSTRUCTION VALUE : \$57 million

Below GBG Concrete and Construction completed detailed excavation, formwork design and construction, as well as extensive concrete placement.

Below Centaman Entrance Control supplied and installed EasyGate SG security gates and a SwingGate for disabled access on the project.



The Gippsland Regional Aquatic Centre is an exciting new community facility for the Latrobe Valley and construction has involved a range of local businesses including the region's largest concrete contractor, GBG Concrete & Construction.

Established in Sale, Victoria in 1954, GBG Concrete & Construction is a family owned business providing civil, in situ concrete, precast concrete and other construction services to projects across Victoria ranging from domestic buildings to large scale commercial and industrial facilities.

GBG Concrete & Construction completed detailed excavation, formwork design and construction, reinforcement installation and concrete placement works for the project. Peri TRIO and SKYDECK formwork systems were used for the works which encompassed ground slabs and foundations, lift shafts, pool bases and ramps, balance tanks and lids, suspended slabs/post tensioned (PT) slabs and grandstand seating platform.

The aquatic centre required some special treatments including shrinkage control admixtures for the balance tanks. A cardboard void former was specified for the ground slab which required weather

protection prior to pouring the slab. In addition to the in situ concrete works GBG also supplied and installed precast stair treads and landings to the waterslide tower. With an inhouse precast yard at their Sale facility, GBG offer a one-stop-shop for both precast and in situ concrete works.

As a local Gippsland business with prior experience on aquatic projects, GBG Concrete & Construction were well placed to deliver a successful result for the Gippsland Regional Aquatic Centre. "We've worked with ADCO before and the project went smoothly for us," said David Coggan, Estimator and Project Manager. "We had to deal with some challenges onsite, first with bushfire smoke and then COVID-19 procedures but we managed all those issues."

On all their projects, GBG Concrete & Construction aims to provide high quality products and services on time and on budget. They offer a large range of specialist equipment backed up by highly trained staff and a comprehensive safety management system to ensure the best results and quality.

For more information contact GBG Concrete & Construction, phone 03 5144 2913, email info@gbg.com.au, website www.gbg.com.au

Centaman Entrance Control is a supplier of entrance control solutions including pedestrian security gates, speedgates and turnstiles. In business for 14 years, they operate nationwide and specialise in corporate offices and leisure facilities.

Centaman supplied and installed two lanes of EasyGate SG security gates and one SwingGate for disabled access to the Gippsland Regional Aquatic Centre. The EasyGate SG lanes were supplied with EasyScan, a cost effective dual RFID and barcode reader which scans both types of credentials in one unit to create a neater and more compact look.

EasyGate SG is a specialist speedgate for leisure applications and includes a customised safety setting to make it more user friendly and tolerant of users who may need more time or are unfamiliar with such systems.

The gates were manufactured in Europe and incorporate the highest quality finishes and detailing at a competitive price. All gates supplied by Centaman are manufactured to ISO9001 quality standards.

The gate installation at the Aquatic Centre went smoothly. "As we are one of the last trades onsite there is never a lot of time at the

end but we had no issues," said Michael Bystram, General Manager. "We worked hand in hand with the builders to align our lead times with their project plan."

Centaman also produced shop drawings for the gates and provided them to the builder, to allow them to install the conduits and wiring.

The company offer a wide variety of pedestrian gates, specialising in solutions for the corporate office and leisure sectors. Centaman Entrance Control has a focus on providing high value solutions that offer market leading innovations for the best possible price.

"We are always looking for new, unique products that add value in the leisure sector," Michael said. "We spend a lot of time vetting our suppliers to ensure they can provide the best quality products at the right price."

For more information contact Centaman Entrance Control, Level 1, 7 Eden Park Drive, Macquarie Park NSW 2113, phone 02 9906 7522, email sales@entrancecontrol.com.au, website www.entrancecontrol.com.au

Below Close Commercial Services supplied and installed Kingspan walls and roofs, as well as polycarbonate cladding and flashings.



Gippsland Regional Aquatic Centre, Victoria

Close Commercial Services are a Melbourne based specialist roofing subcontractor. For the Gippsland Regional Aquatic Centre, they supplied and installed Kingspan roof, Kingspan wall, EEFAS skylight systems, polycarbonate cladding and flashings to make the roof and façade meet airtight requirements.

“We’ve worked a lot with ADCO and they were great to work with on this project,” said Jason Close, Director. “The project went smoothly for us, there was a COVID-19 lockdown during the works but our product was pre-ordered so we were not really affected.”

In addition to aquatic centres, Close Commercial Services also have broad experience on a range of commercial projects for clients nationwide.

“It’s our job to assist the builders in delivering a successful project,” said Jason. “We try to do that little bit extra to get the best result.”

For more information contact Close Commercial Services, 4/30 Network Drive, Carrum Downs VIC 3201, phone 03 9770 8416, email admin@closecommercial.com.au, website www.closecommercial.com.au