

TOP OF THE CLASS

The \$25M Pembroke Middle School Redevelopment designed by Grieve Gillett Andersen, creates an iconic statement within the education sector. The 3-levels comprise six specialist classrooms, 13 teaching spaces, science laboratories, technology workshops and art studios, with a 15 metre feature concrete architectural façade, 'the Shard', at the project's heart.

The new Middle School structure facilitates connectivity and interaction with the existing campus via a covered footbridge, providing safe passage for students and teachers and incorporating future environmental sustainability via solar panels installed on the roof. Prefabricated offsite and installed as a complete structure, the footbridge only required minor onsite work, fast tracking the programme and minimising disruption for both the school and local residents.

Delivering a quality outcome that meets the design intent is a non-negotiable for Sarah Constructions, which was particularly evident in the process of constructing the unique Shard façade – forming the anchor for the project. "It was a challenging brief, and like all our projects, we constructed a sample to provide a benchmark for colour, consistency, angle junctions, jointing, footing connections, plywood layouts and z-bar spacings," said Sarah

Constructions CEO, Adrian Esplin. "Once reviewed and endorsed by the client and consultant teams, we developed and mitigated the Inspection Test Plan (ITP), recording all pre and post activities to ensure quality."

As accuracy and precision were imperative, Sarah Constructions utilised the power of Revit 3D modelling and clash detection technology, enabling any discrepancies with the structure to be determined and managed before a problem arose.

The bespoke Shard element required a stringent stripping sequence, allowing control of finish and protection of later pours. Every four weeks from the date of the pour, the formwork was removed revealing a beautiful, sharp and consistent result. Not only visually striking,

the concrete Shard also provides earthquake resistance to the majority of the building.

"At 15m high, with vertical raking angled walls, it was a challenging but rewarding element of the structure," said Sarah Constructions Project Manager, Paul Marino. "Collaborating with the consultants and subcontractors during the design phase ensured the Shard could be constructed as envisioned. Details were defined, methodologies altered, and a keen and positive attitude implemented by all stakeholders ensured the successful delivery for the landmark project which will attract interest from schools, institutions and construction enthusiasts. Our client was thrilled with the entire process from design, planning and construction and ecstatic with the level of finish and detail," said Paul.

A further stand out in the delivery of this project was the education and involvement of the Pembroke students into the build; Sarah Constructions collaborated with the Pembroke staff to enable the project to become part of the Year 6 curriculum, providing an

invaluable opportunity for the students to learn about sustainable building practices and take ownership of their new space. Pembroke Middle School is now even more environmentally sustainable, with the development delivering solar and water capture as well as utilising environmentally sustainable products and services throughout the build.

South Australian based Sarah Constructions are multi-award-winning builders, renowned for delivering excellent developments and ensuring the best outcomes for their clients. Operating since 1961, Sarah Constructions are industry leaders, taking pride in creating strong working relationships.

Committed to delivering a complete construction experience of high quality assets, Sarah Constructions offers services from concept development to handover across a range of sectors including education, aged care, recreation, commercial and retail.

For more information contact Sarah Constructions, 49 Glen Osmond Road, Eastwood SA 5063, phone 08 7129 8888, fax 08 7129 8899, email contactus@sarah.com.au, website www.sarah.com.au

DEVELOPER : Pembroke School
MAIN CONSTRUCTION COMPANY : Sarah Constructions
ARCHITECT : Grieve Gillett Andersen
CONSTRUCTION VALUE : \$25 million



PACKED TO THE RAFTERS

Since 1967 many South Australians have associated Packers as a manufacturer and supplier of wardrobes, doors and shower screens. However, over the last 10 years Packers have begun to firmly establish itself as one of the States leading aluminium window and door suppliers specialising in commercial projects as well as high end architectural homes.

For over 50 years Packers have always strived to develop strong working relationship with its customers and with Sarah Constructions at Pembroke Middle School, it was no exception. As Managing Director Matthew Morrissey explains.

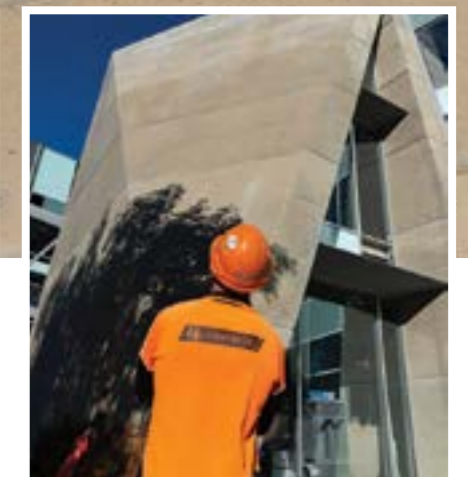
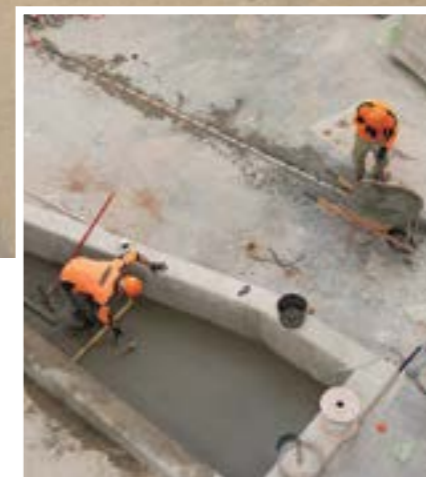
“While installation began late last year we started working alongside Sarah Constructions and the architect nearly 12 months prior due to the complex nature of the project. By knowing exactly what the architect wanted to create from the start we were able to assist in refining the window wall designs before construction, resulting not only in cost savings but a smoother process and minimal project delays.”

During the project Packers had over 25 staff involved onsite which required a lot of onsite coordination to ensure everything ran smoothly. “Many of the unique, double glazed glass panels weighed well over 300kg and mixed in with the added complexity of 14m high window wall panels and the external steel shroud, the project certainly had its challenges” said Matt.

“Our entire team across the board did a fantastic job and we’re really proud of the end result.”

Together with the Wilderness College project for Sarah Constructions, the Packers team are currently also working on the Prospect Council Civic Centre as well as apartment building One On The Park, Greenhill Road.

For more information contact Packers, phone 08 8300 9851, fax 08 8295 4012, email sales@packers.com.au, website www.packers.com.au



STAR QUALITY CONCRETE

With almost 20 years of industry experience, the LA Concrete team began creating the solid foundations and finishes required in March 2018.

“We began with detailed excavations, the reinforced fixing, concrete works, placing and finishing of all concrete on all levels,” said LA Concrete Director, Anthony Di Rubbo. “The concrete Shard was the most challenging in creating a robust, beautiful end product with the angles, but it’s also the most rewarding completed feature.”

The shard is an outstanding architectural concrete expression of the new school’s design. Tonnes of steel reinforcement was masterfully laid out, bent and kinked then encased in plywood and formwork before the layers of concrete were poured and allowed to set for 28 days. “It was a complex project that has taken ages to create but the result was well worth the patience,” said Anthony.

LA Concrete specialises in all types of concrete work, taking on projects from small, to large scale. Their previous work includes several

Aldi stores around Adelaide, the Monarto Zoo Lion enclosure, Royal Flying Doctor Service and other school projects at PAC, Wilderness, St Peter’s Girls, St Marys Memorial and Adelaide High.

“With all our work completed by our inhouse crews we are able to control the overall process, ensuring we deliver the best end product for our clients,” said Anthony.

LA Concrete is also currently working on Prince Alfred College boarding house, St Peter’s Girls Extension, Aldi Shopping Centre at Newton, a multi-level extension at Wilderness School and the 5-storey Kelso Apartments in Rostrevor.

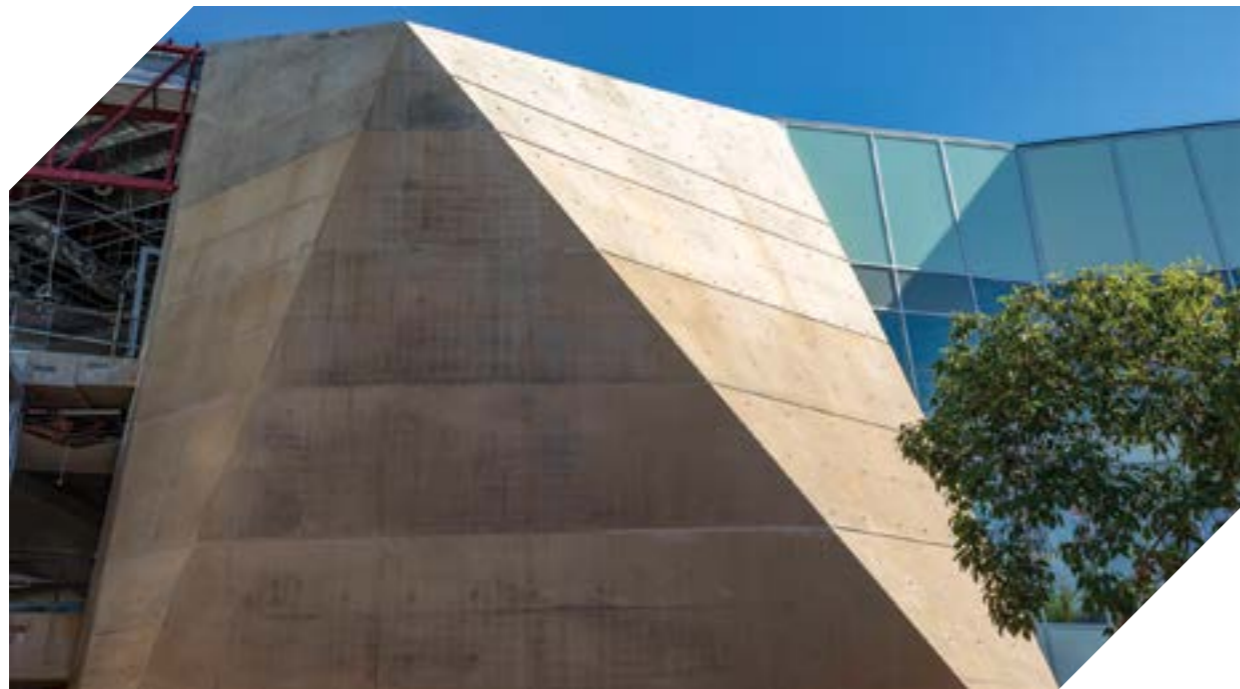
For more information contact LA Concrete, 671 Magill Road, Magill SA 5072, phone (Anthony) 04 0358 3558, email anthony@laconcrete.com.au

Call us on (08) 8332 2833

Liftform is a privately owned formwork and precast services company that has built up a reputation as a leader in the building and construction industry from concept and design right through to construction.

Working closely with our clients we deliver projects on time and to the highest standards which has enabled us to establish long term relationships with them.

Liftform believes a key component to building great structures is building great talent within the organisation. Our ability to bring the highest value to our customers begins by providing our supervisors and employees with the right balance of education, learning experiences and tools.



KEEP ON ROLLING

Award-winning, Adelaide based **Pespaint** specialises in commercial and high end domestic professional painting services. The final finishes and painting for Pembroke Middle School required exacting detail and the precision that Pespaint is renowned for.

As one of the most efficient, conscientious and reliable, full service residential and commercial painting companies, Pespaint provided all the protective coatings to structural steel internally and externally, as well as the decorative coatings to the new school building.

“Internally there’s a 3-storey atrium that required the use of boom lifts for our trade qualified talented team to complete the project. Nothing stops us,” said Director, Dario Pesatino.

Pespaint provide the full backing of Dulux Australia across all their work from heritage restorations, roof restorations, Dulux Acratex and membrane coatings, home makeovers, paper hanging, all new home and commercial projects, protective coatings, epoxy flooring to repaints and building maintenance.

“Regardless of the project size and scope, our philosophy is always the same – getting to know our customers and providing them with exactly what they want and need, plus value adding with innovative solutions. Our professional standards result in an expert finish, as we



only use the best paints and quality tools. No job is too big or too small. We even have eco-friendly paint solutions.”

Pespaint are currently working at Kalyra Nursing Home and Tika Tirka student accommodation.

For more information contact Pespaint, PO Box 18, Athelstone SA 5076, mobile (Dario) 0423 576 799, email dario@pespaint.com.au, website www.pespaint.com.au