

A WORLD CLASS ICON

The Icon Complex is a multi-staged Hotel and retail precinct situated in Hobart's CBD. The project will feature trendy fashion and lifestyle stores as well as a 4.5 star luxury hotel with conference facilities and roof top restaurant.

Kalis Group and its subsidiaries are a privately owned diversified property development and management business that have successfully traded for over 40 years, with significant investments in retail, hospitality, office and industrial property holdings and provide a broad range of property solutions for tenants. They are the developers behind the ICON Complex in Hobart, which in itself is an iconic building. Situated on the footprint of the historic 1836 building, the ICON Complex is set to become a stylish shopping destination for both locals and tourists to the capital city of Tasmania.

The ICON Complex will not just feature fashion and lifestyle stores, but also a 235 room 4.5 star hotel, which will have conference and ballroom facilities and a roof top bar and restaurant with 360 degrees view.

Claiming to be the only new first class retail offering, visitors will be able to visit over 20 premium stores spanned over three levels of shopping galleria and housing the only flagship Myer store in Hobart. Based in the Hobart CBD, the ICON Complex links Liverpool Street to Murray Street as the major artery of the city. The majority of the retail floor space in the Hobart CBD is located within a small retail core and the ICON Complex occupies the very heart of this area.

The much-talked about ICON complex will not only feature key retail brands, but will also mark InterContinental Hotels Group's entry into the Tasmanian market with the brand new Crowne Plaza Hobart.

The hotel's close proximity to major government and commercial offices will be a drawcard for business guests. Hobart's renowned Salamanca Place and Constitution Dock are also a stone's throw away from the ICON Complex, providing easy access for guests during their leisure time. "In expanding into new markets we always look to work with Owners who understand our brands and are familiar with the city we're entering. We are delighted to be establishing our presence in yet another key Australia city with The Kalis Group," said Karin Sheppard, COO of Australasia, Japan, Korea and Asia,

Middle East and Africa (AMEA) Franchising, InterContinental Hotels Group.

Myer is the only major department store operator in Tasmania and will continue to be the major drawcard for Tasmanian shoppers. Two levels of Myer will sit above the speciality stores with linkages and openings encouraging the seamless movement of customers between speciality stores and Myer.

The construction process underwent a variety of challenges, however all of which were overcome with ease. The compressed timeframe and integrated fit-out works bought about a cost-effective change to the design. Workers had to battle with the coldest winter in about 25 years, with wet weather provisions exceeding, in particular the loss of crane time due to wind.

The whole back half of the building is suspended over the Hobart Rivulet so the design needed to include steel megatrusses; these trusses were installed to very fine tolerances to adjacent structures and had a pre-camber designed into them that was calculated by the engineers to deflect back out once fully loaded.

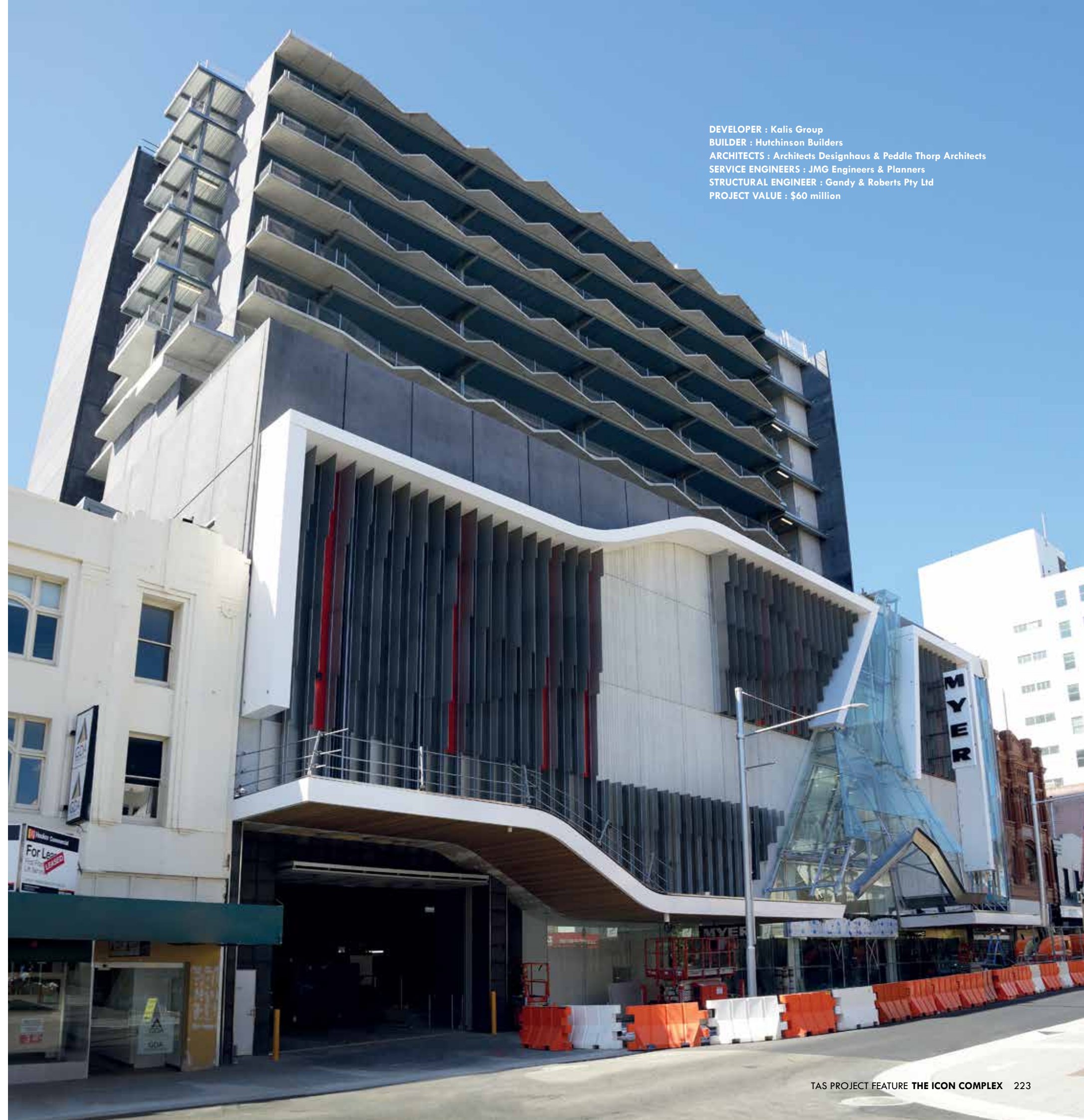
All adjacent buildings were extremely old and in some cases did not have any foundations as we know them today so support was required when excavating the basements. Several of the buildings also were across the title boundaries and thus the design had to be amended as work progressed.

While the Icon Project was going on, Hobart City Council upgraded the adjacent Liverpool Street. Kalis Group were rewarded as the contractor to undertake this work also. As a result this prevented the process of liaising with another contractor and any disruption upon the Icon works.

Retail is retail and as such is a never ending moving target in terms of design and marketing resolution; late changes were inevitable.

For more information contact Kalis Group, 75 Liverpool Street, Hobart TAS 7000, phone 03 6231 3993, email info@kalisgroup.com.au, website www.kalisproperty.com.au

DEVELOPER : Kalis Group
BUILDER : Hutchinson Builders
ARCHITECTS : Architects Designhaus & Peddle Thorp Architects
SERVICE ENGINEERS : JMG Engineers & Planners
STRUCTURAL ENGINEER : Gandy & Roberts Pty Ltd
PROJECT VALUE : \$60 million



Below All Brick Tasmania provided brick and carpentry services to The Icon Complex project.



Below JMG provided engineering design for mechanical, electrical, fire sprinkler and detection and hydraulic services at The Icon Complex.



All Brick Tasmania and Carpentry focus on providing brick and carpentry services to the construction industry, working on commercial jobs throughout all of Tasmania and occasionally residential projects, namely unit developments.

General Manager Colin Barratt has had 38 years' experience in brick and block laying and over the last two years All Brick have provided their clients a one-stop shop carpentry division. All Brick is a family business with Colin and Debbie Barratt and their five sons, Ben, Luke, Matt, Tom and Sam – all of who run their own teams.

Both office and warehouse are located in Mornington, with another branch in Launceston. With approximately 50 employees made up of supervisors, bricklayers, carpenters, apprentices, labourers and truck drivers, the Tasmanian company provide the skills and expertise needed to complete any job.

For The Icon Complex, All Brick supplied and laid blocks throughout. At least 20 employees were involved across various stages of the construction. The carpentry division carried out all carpentry works including installation of up to 100 doors and frames, supply and install 600 lineal metres of oak buffer rail and supply and install of the curved oak ship-lap awning.

All Brick came up against a number of challenges which they dealt with in a professional and calm manner. One of these challenges was building the goods lift shaft from Hebel block as it was a very confined space to work in. Another was working to the deadlines with other tradesman on site which proved to be quite hectic and crowded at times, but was easily manageable by All Brick.

All Brick are also currently working on Parliament Square, KGV Sports Facility, GPO Hobart, the rebuild of Dunalley School having been burnt down in bushfires two years ago, Penny Royal Hotel extensions in Launceston, new buildings at St Patrick's School in Launceston and a variety of unit developments as well as other smaller projects.

All Brick Tasmania and Carpentry continually demonstrate their professional services in Tasmania's building industry, showcasing their clients trust through their quality, policies and work ethics.

For more information contact All Brick Tasmania Pty Ltd, 28 McIntyre Street, Mornington TAS 7018, phone 03 6244 2220, email colin@allbricktasmania.com.au

JMG are a professional engineering, town planning and environmental management consultancy practice who have a strong reputation in Tasmania. They have practiced continuously since 1960 providing consulting and planning for both the building and infrastructure sectors. Their portfolio of works include mechanical, electrical, data communications, fire hydraulics, civil, structural and environmental engineering expertise.

The Tasmanian based company have a specialist team that not only provide engineering design services, but also provide ongoing technical and contract administration in the areas of building compliance, building maintenance, NABERS assessments and performance optimisation of building engineering systems to minimise both costs and environmental footprint. Their 60 plus staff are based across offices at Hobart and Launceston.

Ten people were seconded to work on The Icon Complex project where JMG provided engineering design for mechanical, electrical, fire sprinkler and detection and hydraulic services, including construction phase administration services.

In undertaking the detailed design task, JMG faced a number of challenges. The Icon Complex was a multi-stage project on a very

constrained site, with major upgrading of site services infrastructure required (sewer, water, power, fire), whilst maintaining existing services to the Stage 2 building. JMG also had the arduous challenge of working to tight and fixed timeframes, but their professionalism and experience overcame any problems.

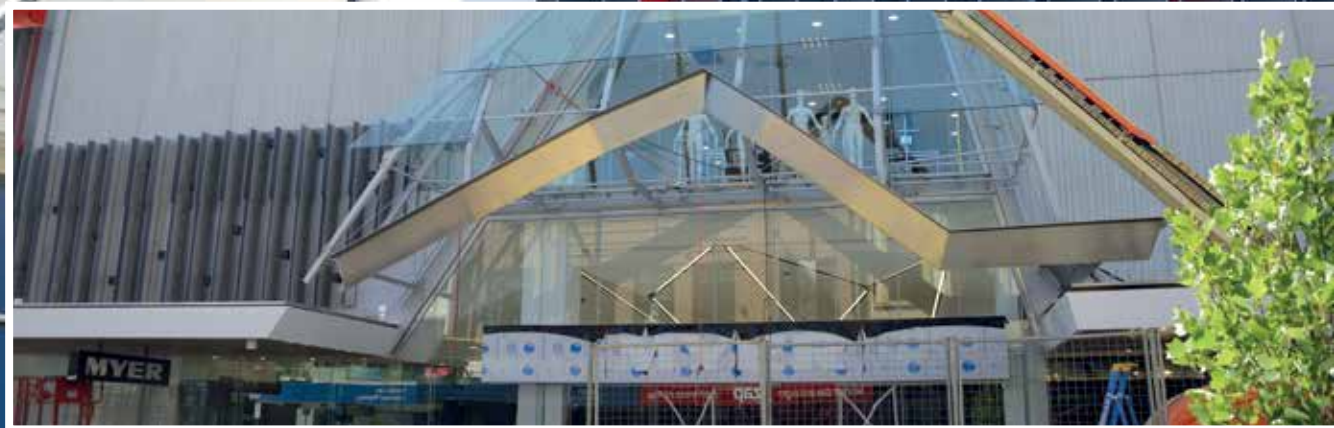
JMG are working on a number of large profile projects, which include the UTAS Academy of Creative Industries and Performing Arts project, Crowne Plaza Hotel (Stage 3 of The Icon Complex), the Royal Hobart Hospital Redevelopment and the UTAS Sandy Bay Campus Heating Infrastructure Upgrade.

JMG also offer expertise in structural engineering for buildings, and civil engineering for subdivisions, roads and infrastructure generally, together with town planning services including feasibility assessments, master planning, community consultation and development applications.

For more information contact JMG Engineers and Planners, 117 Harrington Street, Hobart TAS 7000, phone 03 6231 2555, fax 03 6231 1535, email cholloway@jmg.net.au, website www.jmg.net.au

Below Crisp Bros. & Haywards provided steel fabrication and engineering services to The Icon Complex project.

Below 20th Century Plumbing provided plumbing services to the Icon Complex project.



Crisp Bros. & Haywards are a premier steel fabrication and engineering company who were formed in 1995 from two long established engineering firms dating back to the early 1950's. A highly successful business, they are owned and operated by a team of passionate shareholders and managers, with a total of 252 dedicated and loyal full-time employees.

Hard work, professionalism and dedication to their extensive portfolio paid off as they were awarded the contract to provide basement trusses spanning the Hobart rivulet, entry architectural framing, steelwork for six upper level floors and the roof steel on The Icon Complex project. Crisp Bros. & Haywards had a crew of 6-8 employees on site working on this project.

The Tasmanian company's portfolio consists of heavy engineering, structural steel, architectural steelwork, wind towers, steel bridges, oil and water storage reservoirs, as well as work boat and feed barges for the aquaculture industry.

Diversity is a part of who Crisp Bros. & Haywards are and they have shown this by providing workshops around Tasmania to deliver to their clients. The workshops are located near the Launceston airport

at Western Junction, in Kings Meadows Launceston, at Wynyard in the north west of the state and at Margate in the south of Tasmania.

Crisp Bros. & Haywards' reputation for delivering high quality work continues as they are involved in a number of projects around Tasmania, which include the Macquarie Wharf No.1 Hotel, the Royal Hobart Hospital Redevelopment, accommodation huts for the Three Capes Track, Huon Aquaculture hatchery, Grain Corp Melbourne Terminal, Sulphuric acid tanks for McArthur River Mines in the Gulf of Carpentaria, Tasmanian Alkaloids Waste Water Treatment Plant, three feed barges for Tassal and a Catamaran for Huon Aquaculture.

For more information contact Crisp Bros. & Haywards Pty Ltd, 160 Hobart Road, Kings Meadows TAS 7249, phone 03 6344 4144, fax 03 6343 1667, website www.crispbros.com.au

The Icon Complex in Hobart will be the new lifestyle hub for locals and tourists. The impressive building will feature over 20 stores, three levels of shopping galleria, 4.5 star hotel with 235 rooms, conference and ballroom facilities, rooftop bar and restaurant with a 360 degrees panoramic view and the only flagship Myer store in Tasmania.

20th Century Plumbing were contracted to provide sanitary plumbing, reticulated water, sewer and storm water pump stations, fire hydrant systems, fixtures and fitout as well as a Tasmanian water sewer diversion.

The company consists of qualified, experienced and carefully selected technicians that provide clients with the skills and expertise needed for any job, no matter if it is big or small. A workforce of 20 people, seven of which were dedicated to working on The Icon Complex project.

The company, now over 40 years old, offers clients a 24-hour emergency call out service and work 365 days a year. It is their commitment to providing the best service to their existing and future clients.

The 20th Century Plumbing philosophy is simple; arrive on time looking neat and respectable, do a professional job, clean up and charge a realistic price.

Their impressive portfolio of work consists of hot water cylinder repair, installation and replacement, clearing blocked drains, rain water harvesting, stormwater drainage installation and repairs, installation of onsite waste water systems, unblocking septic systems, solar installations, heat pump and evacuated tubes.

Current projects for 20th Century Plumbing include the Royal Hobart Hospital, Mitre 10 in New Norfolk and the Mary Ogilvy Homes Society in New Town.

For more information contact 20th Century Plumbing Pty Ltd, 69 Lampton Avenue, Derwent Park TAS 7009, phone 03 6272 5633, email centuryplumbing@trump.net.au, website www.20thcenturyplumbing.com.au

Below Nu Tech Tiling provided tiling services to all floors for the Icon Complex.

Below United & City Lifts and Access Solutions designed, supplied and installed eight escalators and three lifts in The Icon Complex.



With over 20 years of tiling experience, the crew at NuTech Tiling has been able to consistently provide impeccable industry standard products and services. The Victorian based outfit have successfully delivered a wide-array of projects ranging from the shores of Australia to the dense cities of Europe, which has given provision to becoming a leader and well-known figure in the industry.

Taking pride in providing a professional service, using premium products, and applying a personal touch is what drives and motivates NuTech to always deliver an outstanding service whilst meeting all relevant environmental standards. In order to ensure projects are delivered on time, there is a key focus on the importance of developing and maintaining interpersonal relationships with all clients both during a project, and after its completion. Over the years NuTech has diversified and flourished into an organisation that never passes up the opportunity of a challenge as no project is too big or too small. Their portfolio has a broad and diverse spread ranging from new builds, refurbishments, alterations and fit-outs, which extend throughout the health, commercial, educational, entertainment, hospitality, residential and retail sectors.

Some services that NuTech specialise in is the supply and installation of floor and wall tiles, screed works, waterproofing membrane

applications, stone bench tops, and outdoor exterior cladding. From intricate mosaic application, to gigantic stone slab installation, NuTech have evolved to offer a huge variety of works utilising various world class materials and textures. NuTech's impressive scope of completed projects include: Crown Casino Atrium Bar, Hume Global Learning Centre, the Icon Complex, Bacchus Marsh Shopping Centre, and the QANTAS Chairman's Lounge. These examples exhibit NuTech's appreciation of practicality, class, and elegance, as they regularly import their materials from likes of Europe and Asia in order to ensure their clients receive a cost effective and superior product.

The Victorian company expect to see out 2015 and the start of 2016 with a number of projects in-hand including the V2 Apartments, The Royal Elizabeth, Decco Apartments, and Sandy Hill Apartments just to name a few. NuTech derive their success from an ability to provide an unappalled level of service to its clients where they aim to create an environment and culture from which all members are focused on a common goal – to achieve and surpass expectations.

For more information contact Nu Tech Tiling Pty Ltd, Unit 3, 6 Ovata Drive, Tullamarine VIC 3043, phone 03 9338 8955, fax 03 9338 9532, email sales@ntta.com.au, website www.nutechtiling.com.au

The new Icon Complex is a multi-staged commercial and retail tower situated in Hobart CBD that is set to become Tasmania's premier retail destination. Stage one of this exciting new project involves the construction of a 5-level Myer store with direct Liverpool Street frontage, and a boutique 235 room 4.5 star hotel situated above with a rooftop bar and 360 panoramic views. Other stages will include Myer frontage on Murray Street, food court and more premium retail tenancies.

Access Solutions in conjunction with United & City Lifts were contracted to provide design and specification resolution for the supply and install of three lifts and eight escalators in The Icon Complex. The builder welcomed their unique ability to provide customised options for the elevator's pit depths, overhead clearances and bespoke design. With a extremely tight critical path programming schedule and the debilitating Tasmanian weather, Access Solutions and United & City Lifts had their work cut out for them. Working in with Hutchinson Builders, they craned in eight escalators, despite scaffolding interference and the immediate proximity of many pedestrians. Due to their ability to offer an altered installation process, Access Solutions and United & City Lifts were also able to reduce the expected industry standard lift install of eight weeks, to just three weeks. The Icon project benefited from their total flexibility, local capacity, broad technical knowledge, national experience and compliance.

Access Solutions and United & City Lifts have been in business for over 21 years, with 100 people currently employed. Being experienced in their field, the two companies are working on a number of large lift modifications and install projects in Sydney, Melbourne, Tasmania and Western Australia.

Access Solutions and United & City Lifts ensure satisfaction with their clients by offering flexible and alternative solutions - such as pre-commissioned lift crane in options up to 3-4 levels, which significantly reduces onsite lift installs to 1-2 days.

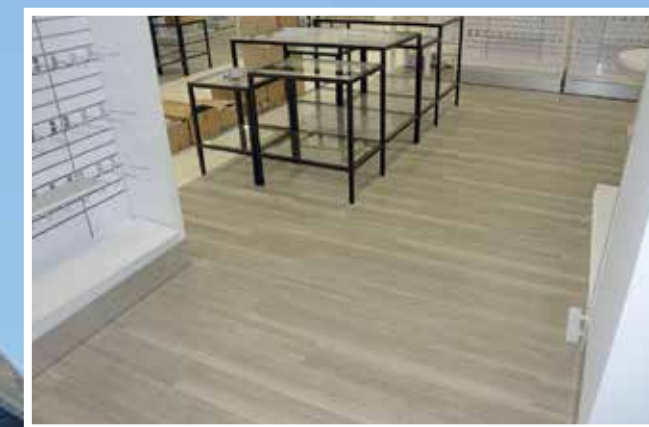
Current projects involve the Alfred Hospital, 27 Terry St Apartments which included 4 lifts servicing 50 floors at 5m/s in Melbourne, Linear Park Apartments, Parliament Square, the Macquarie Wharf 5 star hotel in Hobart, Pinjarra Shopping Centre, and Parliament House in Perth. With their willingness to be flexible in all aspects of design, Access Solutions and United & City Lifts are able to adjust to the constraints and conditions that are present with all projects, offering a unique solution for the best outcome.

For more information contact Access Solutions, phone 03 6229 2476, website www.access-solutions.com.au

United Lifts, phone 03 9687 9099, website www.unitedlifts.com.au
City Lifts, phone 08 9418 4222, website www.citylifts.com.au

Below Spectran Group provided demolition and civil, traffic management and transportation services for The Icon Complex.

Below The Carpet Company provided and installed carpet, resilient floor and wall coverings to The Icon Complex.



Spectran Group is a business built on excellence and dedication.

For more than 15 years, Spectran Group's management have been working hard in the environmental services, civil construction, transport and traffic control services. The Tasmanian company and their employees have made the commitment to provide their customers with dedicated and loyal service, which is backed by their extensive experience and desire to meet any of their customer's service requirements.

With 85 people working for Spectran Group, 35 people were seconded to The Icon Complex project in Hobart. Their works included demolition and civil works, transport of elevators, traffic management and the transport of the crane used on the project. Whilst works went smoothly, their biggest challenge was undertaking the demolition work around existing properties and the public without interference.

Their next project includes the demolition and excavation work at the Fragrance Hotel in Hobart's CBD.

For more information contact Spectran Group, 6 Birdwood Avenue, Derwent Park TAS 7009, phone 03 6272 9377, website www.spectrangroup.com.au



The Carpet Company are a locally owned business which was established 20 years ago by Greg Plunkett. The 16 full-time staff, and sub-contract floor covering installers, are based in Hobart's CBD, providing central access to new and existing clientele.

The Tasmanian company are specialists in the supply and installation of carpet, resilient floor and wall coverings on commercial projects. They also work closely with their clients with project specification and pre-project cost estimating. With their extensive knowledge and experience, they provide Green Star, fire certification and slip rating certification advice for floor and wall coverings prior to being specified by architects, designers and clients.

The Icon Complex project will soar from the ashes of the historic 1836 Myer building to reach new heights and designed to house the very best of fashion, cuisine and lifestyle products on Liverpool and Murray Streets in Hobart's CBD. The Icon Complex will become a style hub for shoppers from Hobart and beyond.

The Carpet Company had 12 staff involved with The Icon Complex project, including an estimator, project manager, installations managers, site foreman and tradesman.

They installed Shanhua Axminster carpet using the dual bond method of installation and installed Polyflor Expona Vinyl Plank, all to Myer's specifications. They also undertook floor preparations prior to installation of both carpet and vinyl plank to specifications.

They coordinated and completed the works to high standards expected by the end client, even with a tight timeframe and working with other subcontractors onsite.

The Carpet Company who has a reputation for delivering quality works have an extensive portfolio of future works which include the early works on Royal Hobart Hospital, Barossa Park Wellness Centre, Taroon High School and Tasmania's Ombudsman's Office Fitout.

For more information contact The Carpet Company, 105 Harrington Street, Hobart TAS 7000, phone 03 6234 3242, fax 03 6231 1312, email admin@carpetcompany.com.au, website www.carpetcompany.com.au