

BOUNDLESS LUXURY

DEVELOPER : John Singleton Group (Bonython Property and Investments)
MAIN CONSTRUCTION COMPANY : Stevens Construction
ARCHITECT : White+Dickson Architects
STRUCTURAL ENGINEER : Northrop Consulting Engineers
INTERIOR DESIGNER : Michelle Leslie
CONSTRUCTION VALUE : \$22.5 million



Ravello Residences are a collection of signature residences comprising 40 luxurious apartments, including three penthouses with extraordinary attention to detail, multiple living and alfresco areas, butler's pantries, granite and quartzite benchtops, cast stone baths, media rooms, walk-in cellars, flawless finishes and custom fittings. The project offers spectacular water views exemplifying the ultimate example of superior standards and world class living.

Developed by Bonython Property and Investments, Ravello Residences is a new Central Coast development by renowned entrepreneur John Singleton following the award-winning Bonython Tower.

Spectacularly sited at Point Frederick on Gosford's Brisbane Water, Ravello offers a collection of luxury residences with stunning features, expansive water views and extraordinary scale and comfort. "After the success of Bonython Tower, John Singleton wanted to push the boundaries again by building the first truly luxury apartment project in Gosford," said Andrew Dickson, Principal, White + Dickson Architects.

Ravello sets a new bar for luxury on the Central Coast. Interior designer Michelle Leslie worked with White+Dickson to develop the internal design concept which sees premium fittings from Parisi and Studio Bagno paired with ILVE kitchen appliances and organic, prestige surface finishes inside and out.

"John wanted the design to be timeless and elegant, so we used classical architectural proportions, massing and scale to imbue a sense of elegance and create an enduring legacy," Andrew said.

A lot of careful planning went into the project to ensure the delivery was as smooth as possible. "We worked very closely with our consultants to identify a gap in the Point Frederick market and conceive the scheme.

We then assembled a team with the track record of delivering the quality projects that John's reputation is built on," said David Norris, CEO of the John Singleton Group

The project was delivered by award-winning Central Coast based builder Stevens Construction who previously delivered Bonython Tower. "We once again hand picked the very best people to bring us something extraordinary," John Singleton said.

It was not without challenges, particularly during early excavation works as the waterfront site had a water table close to the ground level. "Stevens and Northrop Engineers did a great job resolving those early issues and it has been an incredibly smooth process since then," Andrew said.

The investment in Ravello by John Singleton has proven successful, with all apartments sold off-plan before completion.

Ravello's impact on the Central Coast is already apparent with the project listed in a recent Daily Telegraph article as one of '15 properties that will change the face of the Central Coast'.

"It has been very rewarding to see the project come to fruition and the reality matches our early vision 100%," said Andrew. "We have set a new benchmark in Gosford and are now seeing other people consider the Point Frederick precinct in a different light with better quality developments starting to come through."

John Singleton Group are now building on the success of the Ravello Residences with other projects in the pipeline including the transformation of the Mount White Saddles Restaurant precinct and another collection of luxury residences on East Gosford's Brisbane Water.

For more information contact John Singleton Group (Bonython Property and Investments), 120b Underwood Street, Paddington NSW 2021, phone 02 8376 8862, email sales@bonythonproperty.com.au, website www.bonythonproperty.com.au



Below Stevens Construction were selected to deliver Ravello after their award winning work on Bonython Tower and other developments.

Ravello is a luxury 7-storey residential project featuring 40 generously proportioned residences with oversized outdoor terraces and uninterrupted views over Brisbane Water on New South Wales' Central Coast. All apartments are luxuriously appointed with organic textures and bespoke features including honed limestone flooring, Laminam porcelain and European Oak internal surfaces, ILVE kitchen appliances, and Parisi and Studio Bagno fittings.

The project is the second luxury Gosford development by renowned entrepreneur John Singleton following the award-winning Bonython Tower. Leading Central Coast based builder Stevens Construction was selected to deliver Ravello having received the prestigious Master Builders Association NSW Commercial Builder of the Year award for their work on Bonython Tower as well as other developments.

The success of this prestige development required care, collaboration and precision. "The devil is in the detail on this sort of project with bespoke finishes used throughout," said Adam Packer, Project Manager. "Stevens Construction is very experienced in high-end projects. We understand that attention to detail, and a close working relationship with the Client and project team is crucial to ensuring that the design intent is achieved, and mitigating any potential issues during construction."

The project is in a highly visible location. The proximity to Brisbane Water, in conjunction with existing infrastructure, presented various challenges. "The water table is close to ground level and this required consideration and care during planning ground works and subsequent construction activities," Adam said. "There were also some existing underground services to work around, of which the whole project team worked cohesively to come up with solutions."

Stevens Construction is a multi-award-winning builder with a strong reputation, having successfully delivered a wide range of distinctive, high-quality projects since being founded in 1988. From their home base on the Central Coast, they have a state-wide presence catering for urban and regional areas of New South Wales.

Despite this growth, the company's Directors, Jason Lewis and Steven Mailey,

have maintained a very hands-on approach. They believe in giving clients the added advantages of direct communication with key people on the Stevens Construction team. Jason and Steven bring a combined 67 years experience in the construction industry, along with a strong client focus and a relentless commitment to quality.

Stevens Construction specialise in commercial, retail, industrial, hospitality, multi-residential and tertiary sectors. Their diverse team has specialist expertise in design, planning, engineering and construction management which stems from solid experience in the construction industry.

On all their projects, Stevens Construction are committed to delivering quality, on-time projects with high standards in workplace health and safety. They seek to build long-term relationships with their clients while continually improving their efficiency and offering cost effective solutions that are innovative and practical.

As part of Stevens Construction's commitment to their staff, they foster a fulfilling work environment and offer opportunities for their staff to build long term career paths within the company.

"Stevens Construction always strive to work closely with the client and project team to ensure the project runs smoothly and Ravello was no exception," Adam said. "Now we are starting to see the original design vision come to fruition and are proud to see it come together so well."

Stevens Construction wish to thank the John Singleton Group team in conjunction with all consultants and contractors, in working together to achieve the same common goal of delivering excellence on the Central Coast.

With Ravello, Stevens Construction have remained true to their vision of setting the construction industry benchmark for meticulous safety while delivering a high quality, on time build.

For more information contact Stevens Construction, Level 1, Suite 4, 168-170 Central Coast Highway Erina NSW 2250, phone 02 4365 8149, fax 02 4367 2372, email admin@stevensconstruction.com.au, website www.stevensconstruction.com.au



Below Serious About Civil completed demolition works, bulk excavation and detailed excavation for the strip footings and foundations.

Below Goal Interiors supplied and installed premium Stryum non-combustible aluminium cladding panels for the development.



Serious About Civil is a civil contractor established 12 years ago by director Gary Bowers who brings more than 20 years experience to the business. They were recently involved in the Ravello Residences project.

Initially Serious About Civil carried out the demolition of the existing low rise commercial properties occupying the site before undertaking bulk excavation and detailed excavation for the strip footings and foundations.

The existing site contained a high proportion of acid sulphate soil requiring remediation and removal of contaminated materials. Serious About Civil completed all associated soil treatment, removal and haulage. They also installed dewatering spears to enable efficient dewatering of the site.

At Ravello, Serious About Civil continued their existing relationship with main contractor Stevens Construction. “We know Stevens well and had a good relationship with everyone onsite which helped the works go well,” said Gary. “It was quite a complicated project with multiple trades working on the ground at once so having the ability to work with others was really important.”

Based in Gosford, Serious About Civil offer a wide range of civil services to developers and contractors and have worked on around 80% of recent large scale commercial and residential projects on the Central Coast.

On many projects, Serious About Civil offer a full turnkey civil contracting service and operate their own plant and equipment including piling rigs, trucks and trailers and excavators from 5 to 35 tons. The company also has a 20 strong team with no reliance on subcontractors giving them greater control over quality and timescales.

Drawing on their specialist expertise and with the capability to deliver a wide range of civil services from demolition to detailed anchoring and piling, Serious About Civil can achieve outstanding results on the most challenging projects.

For more information contact Serious About Civil, 377 Manns Road, West Gosford NSW 2250, phone 02 4322 2441, email email@seriousaboutcivil.com.au, website www.seriousaboutcivil.com.au

Specialist commercial and residential plastering firm Goal Interior supplied and installed external cladding to the new Ravello Residences, a prestigious residential development by Bonython Property.

Goal Interior sourced premium Stryum non-combustible aluminium cladding panels for the development. They also installed internal partitions throughout the development including fire rated and acoustic walls.

“We specialise in these types of buildings so the job went quite smoothly for us,” said Project Manager, Ken Cai. “We also know the Stevens Constructions very well and we have been working with them a long time. We know what they want from us and find them very easy to work with.”

Established in 2007 by experienced plasterer Yubin Bing, Goal Interior provides a complete range of plastering services for many types of projects including education, aged care, low to high rise apartments and commercial developments. From their home base in Sydney, Goal Interior also has extensive experience on the Central Coast including aged care facilities in Erina and other developments for Bonython.

Goal Interior applies advanced work methods and leading edge technologies to ensure they complete their work to a high standard with safety and cost effectiveness paramount. They can work with a wide range of internal partition, ceiling and cladding products and are certified installers for leading brands.

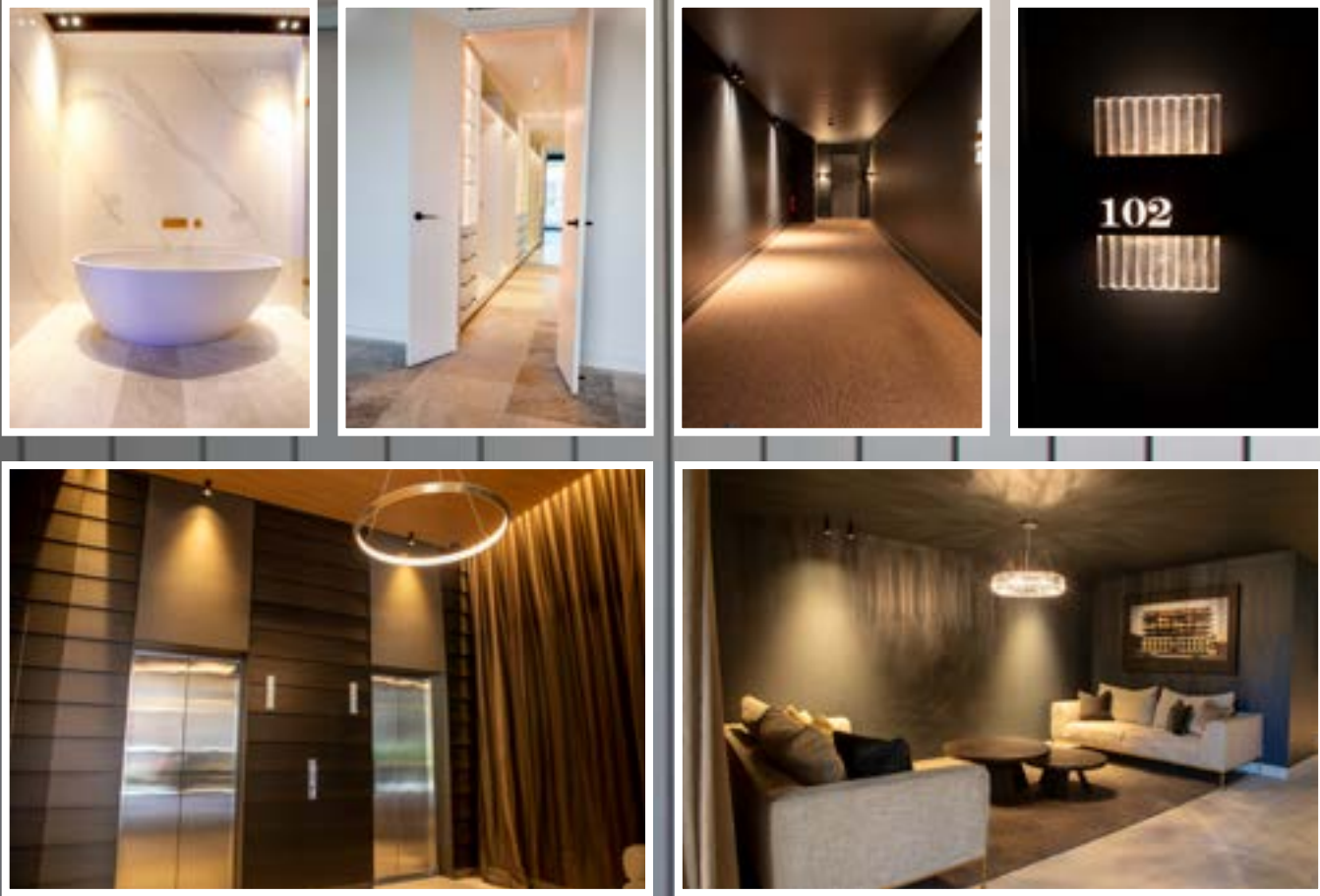
Whatever the project, Goal Interior is focused on quality and on time performance which has helped them build a reputation for reliability in the industry. They are committed to providing exceptional service and value to every project.

“We always try to provide the best service to the builder,” said Ken. “We are proud of what we achieved at Ravello. It’s clear the builder and all subcontractors paid attention to getting the details right. It’s a very good architectural design.”

For more information contact Goal Interior, Unit 4, 40 Anzac Road Chullora NSW 2190, mobile (Yubin) 0449 183 868, email ken@goalinterior.com.au, website www.goalinterior.com.au

Below Economy Waste Group provided skip hire throughout the duration of the Ravello Residences construction.

Below SKE Electrical supplied and installed architectural and feature lighting throughout the project to create a high end feel.



A clean construction site is a more productive site. Skip bins are often the difference that keeps construction sites safe and clean. The Ravello Residences, a development comprising 40 luxurious apartments and penthouses in central Gosford, benefited from the services of Economy Waste Group who provided skip hire throughout the whole project.

Economy Waste Group is a full service waste management company based on the Central Coast of New South Wales. They have been providing skip bins since 1990 for short and long term hire for a range of applications across many industry sectors.

“Our ability to service large projects coupled with our knowledge, construction industry expertise and focus on customer service is always of benefit as was seen at Ravello,” said Director, Sam Calleja. “We understand that our clients are our most valuable asset. We continually strive to improve the waste removal process. In this instance craneable bins were supplied to provide a smooth flowing system while other sized skip bins and other specialised bins were also supplied.”

Economy Waste Group is a proud local business with a reputation for reliability and efficiency across all areas of the Central Coast.

They strive to provide sustainable waste solutions with over 85% of all waste materials they collect being recycled. They are EPA licenced and their site is a council approved recycling facility.

With an extensive range of trucks and bin capacities ranging from 2m³ to 23m³, Economy Waste Group caters to all industry requirements and individual project specifications from home clean ups to large new build projects. They aim to provide flexible, competitive and all inclusive costs with no weight restrictions and nothing more to pay.

For more information contact Economy Waste Group, 3 Bowen Crescent, West Gosford NSW 2250, phone 02 4325 1800, email sales@economywaste.com.au, website www.economywaste.com.au

SKE Electrical delivered the full electrical installation for the Ravello Residences project including mains installation, fire, security and access control systems. Premium electrical fittings were used throughout the development including all apartments.

“This was not a standard domestic installation,” said Steve Skidmore, Project Manager. “A lot of high spec fittings were selected to complement the architectural design, for example the LED strip lighting which required a lot of precision. We had to think outside the box to set it all out properly, using laser levelling and other tools to ensure a top quality fitout.”

As the fitout progressed, SKE Electrical worked closely with Stevens Construction, the client and design team to ensure the installation was completed to a high standard.

“Stevens Construction have a good approach to resolving challenges collaboratively,” Steve said. “Everyone has been impressed during inspections so it seems to be a winner.”

Based in Newcastle, SKE Electrical specialises in high rise residential and commercial projects. They also work in industrial, solar power,

communications and home and business automation and have an inhouse Green Smart accredited sustainability professional.

Workplace health and safety are key focus areas for SKE Electrical. They have been a licenced and accredited business for more than 20 years and have built a strong reputation for quickly and cost effectively turning over projects without sacrificing quality.

“On all our jobs we try to work with the project team to find solutions to any issues that arise,” Steve said. “Everyone on site is trying to achieve the same goal so our aim is to be friendly, helpful and get the best outcome for the project.”

For more information contact SKE Electrical, Unit 2/51 Pacific Highway, Bennetts Green NSW 2290, phone 02 4948 4211, email reception@ske.com.au, website www.ske.com.au

Below East Coast Frameless Glass installed 76 extra thick 10mm toughened glass showers screens with bespoke bronze finishes.

Below Intrim Mouldings provided a Shadowline skirting board and Shadowline door jamb to add an extra detail to the development.



East Coast Frameless Glass supplied and installed around 700 linear metres of frameless balustrades and 76 frameless shower screens to the Ravello Residences.

Most balustrades were made of heat soaked toughened glass with a stainless steel top rail and were installed in long runs of up to 44m while the shower screens were made of extra thick 10mm toughened glass.

“The client had very particular requirements,” said Director, Daniel Moffitt. “For example the brackets and hinges for the shower screens needed an antique bronze finish to match the tapware. No suitable products were available so we placed a bespoke order with our supplier for a limited run which took a lot of pre-planning.”

East Coast Frameless Glass worked closely with main contractor Stevens throughout the project. “We have a good relationship with Stevens Construction,” said Daniel. “We engaged with their estimation team to work out how to deliver the project from well before the build started.”

The installation process has not been without challenges. “Such long continuous runs of balustrading are very unusual and makes this

project quite unique,” Daniel said. “It’s been awesome to see our installers getting that as straight as they have.”

The inhouse installation team at East Coast Frameless Glass gives them greater control over the quality of the end result. “The expertise and attention to detail of our team is very important,” said Daniel. “We are also able to work with our supplier network to ensure we can turn orders around fast when we need to without impacting quality.”

Based on the Central Coast and also serving Sydney and Newcastle, East Coast Frameless Glass are focused on delivering great service and affordable solutions for residential projects of all types.

For more information contact East Coast Frameless Glass, phone 0409 445 881, dan@ecfg.com.au, www.eastcoastframelessglass.com.au

Intrim Mouldings is an Australian owned and operated manufacturer of timber mouldings and handrails for residential, aged care, healthcare, hospitality and other sectors. They supplied skirting boards and door trims to the Ravello Residences.

Intrim provided the Shadowline SK800 skirting which is a 2-in-1 system incorporating a built-in joint to achieve a shadow line with no need for the traditional P50 metal angle or the hassle.

“Once the SK800 skirting is in position you just bring the bottom edge of the plasterboard down on top of it and set the plasterboard to the top of the skirting” explained Rohan Quinsey, Project Manager. “It also gives a more consistent and straight shadow line as well as a 30% time saving on installation.”

The Intrim’s DJ800 Shadowline door jamb which also features a built-in shadow joint was used alongside the SK800 Skirting to give a consistent feel to the internal trims at Ravello. “Our products are all about saving cost without compromising on quality,” Rohan said. “We’ve worked with Stevens before so they understood the process and helped ensure everything went smoothly on this project with good communication and no issues onsite.”

Established in 1993, Intrim specialises in timber mouldings, skirtings, architraves, handrails, wall panelling and custom bespoke solutions. Their manufacturing and warehouse facility in Picton, New South Wales is conveniently located close to Sydney with the ability to supply Australia wide.

Intrim also offers a range of other innovative products. One example is FastTrim, a revolutionary new system of pre-cut and pre-scribed skirtings and architraves that reduces time and labour onsite while also minimising waste. “We are a solutions-based company,” said Rohan. “We are constantly innovating and collaborating with our clients to create off the shelf and bespoke solutions that work and fit within their budget.”

With the founder of Intrim a former carpenter and builder, the combination of continuous innovation and a focus on quality has made Intrim the benchmark for specialised mouldings and architectural building products with a reputation for service, quality and innovation throughout the industry.

For more information contact Intrim Mouldings, 14 Redbank Place, Picton NSW 2571, phone 1800 622 081, email info@intrimgroup.com.au, website www.intrimmouldings.com.au