

THE BEST OF BOTH WORLDS

DEVELOPER : St Hilliers and First Point Property
MAIN CONSTRUCTION COMPANY : St Hilliers
ARCHITECT : Group GSA
CONSTRUCTION VALUE : \$65 million



Part of the Thornton Central development in Penrith, which is being constructed over multiple stages, the Sheffield apartments offers two architecturally striking 10-storey buildings, including 204 apartments, with 13 unique and innovative double-level loft style penthouses with floor-to-ceiling double height glazing in a vibrant residential hub.

Situated in the heart of Penrith, the Sheffield apartments is part of the newest stage to the Thornton Central development.

Pitched to be the tallest residential hub in the area, Sheffield apartments offers architecturally designed one, two and three bedroom apartments as well as loft style penthouses never before introduced to the suburb.

Thornton is the first high rise residential and mixed use precinct to be built in Penrith's city centre and is the catalyst to the areas much acclaimed city transformation as part of the wider Thornton community, masterplanned by Urban Growth NSW.

St Hilliers were responsible for the design and construction of Stage 3, consisting of two, 10-storey residential towers, offering 102 apartments in each tower. The first tower is now fully occupied, with the second tower nearing completion.

"Stage 3 required stringent attention to detail, to meet the design vision of this latest stage. A striking and distinct façade provides a true sense of identity for those residents and is well positioned for views of the mountains and recreation areas," explained Chad Doran, St Hilliers Senior Construction Manager.

Creating a stunning impact to the urban landscape, the façade showcases striking floor to ceiling glazing from the penthouse level, mixed with the standout slick elegant colour block façade panels.

The 13 double-storey penthouses required special design coordination, ensuring the right combination of quality, services coordination and glazing all fitting together to provide a product not seen in the area until now.

"We used Equitone for the façade work," said Chad. "The panels are single composite sheet material, left raw and untreated. Although this is a product we've used before, it again proved successful at Sheffield in both appearance and its capacity to withstand environmental issues."

Working across Australia, St Hilliers are a property and construction group with expertise across a diverse range of projects in sectors including defence, education and infrastructure as well as residential and commercial projects. Able to provide property development as well as D&C services, St Hilliers have an impressive portfolio to their name.

The team are currently working on a number of construction projects including defence projects throughout all of mainland Australia, new and upgraded schools, plus infrastructure projects such as Strangers Creek truck drainage upgrade in north-west Sydney.

In addition to the Thornton development, St Hilliers are underway with their newest development at 32 Mann Street, Gosford, a new mixed use development creating office space and living.

St Hilliers have a strong commitment to various community charities and organisations, for example, partnering with Coast Shelter who, provide accommodation and support programmes for homeless on Central Coast of New South Wales and the Kids West Charity, where the Thornton Penrith team of workers successfully funded an additional humidicrib for the Neonatal Intensive Care Unit of the local Nepean Hospital.

For more information contact St Hilliers, 8 Windmill Street, Millers Point NSW 2000, phone 02 9259 5200, website www.sthilliers.com.au



MAKING THE RIGHT CONNECTION

Well Connected Electrical Services (WCE) recently delivered the final stages of their electrical contract as part of the The Sheffield, Thornton Central Development.

The large mixed use project in Penrith is a multi-staged development consisting of Stages 1, 3 and 5. Featuring 253 architecturally designed units across five buildings and up to 11-stories, Thorton Central also features a 115 room (60 dual key) hotel for Quest Hotels.

The contract for WCE involved the design, supply and installation of all electrical services, communications and security. For these stages of the \$140 million development, it meant designing, supplying and installing the services across all a range of buildings and purposes.

Stages 1 and Stage 3 of the Precinct covered four buildings over a common 2-level basement in Stage 1 and a single 10-level tower with 2-storey apartments on the top floor.

The Level 10 apartments in Stage 3 included large full height atriums and suspended stairs. Slim line fittings, high quality and efficient led lighting throughout finished at the highest quality were supplied for the project.

“We were tremendously pleased to be awarded such an extensive, commercial project,” says WCE Director, Louis Ceagea. “Although we have worked on many commercial projects, Stage 5 of Sheffield was challenging when it came to security and ensuring all communication services synergised effectively.”

“A greater challenge was meeting the requirements of energy efficiency in our electric supplies as there have recently been changes to Australian regulations in keeping with emissions reduction,” explained Louis. However, in overcoming these difficulties WCE surpassed expectation, finishing the final stages of Sheffield ahead of schedule.

Quest Hotel comprises 69 dual key apartments across 7-levels offering studio, one, two and three-bedroom units. With a high star rating, a gymnasium and conference room as well as onsite parking, the supply of electrical services, communications and security

had indoor and outdoor considerations. For WCE, this called for a complex yet easy to use security and intercom system.

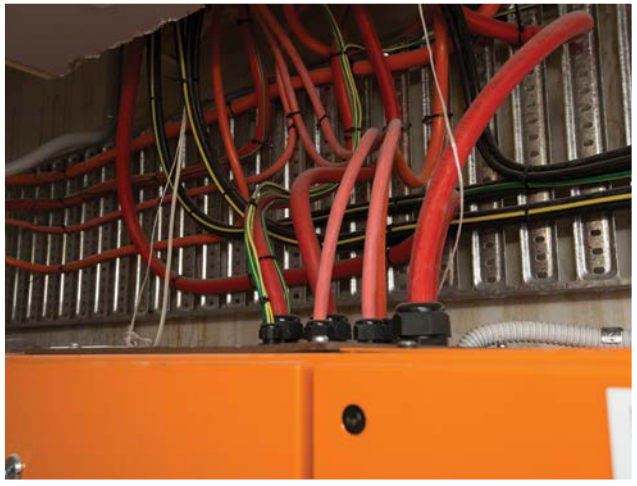
“There were different keys for all doors and the whole system of surveillance both inside and out needed to be in correspondence,” explained Louis.

WCE’s scope of work extended to the project’s extensive landscape surrounds, with the company providing garden lighting, safety switches, hot water systems and surveillance monitoring and intercom systems.

Licensed electricians WCE were first established in 2006 and operate throughout the Sydney region with a team of 13 personnel. Specialising in domestic and commercial projects, their services are cover an extensive range, from shop fitouts to private homes with automation to large scale apartment and hotel developments and commercial buildings.

WCE are able to provide a range of services such as property maintenance, lighting, switchboard upgrades, audio/video intercoms, phone and data connections, smoke detectors, security and external lighting, ceiling and exhaust fans, landscape lighting, power infrastructure and complete overhauls.

For more information contact Well Connected Electrical Services, 1007 Old Northern Road, Dural NSW 2158, phone 1300 677 693, email service@wellconnectedelectrical.com.au, website www.wellconnected.com.au





NO STOPPING THE RHINO

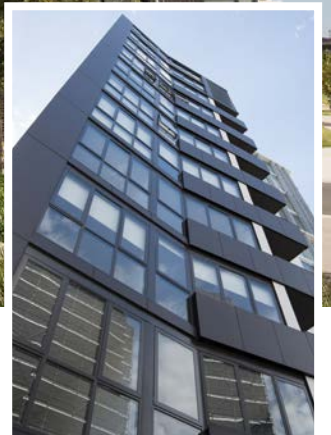
Undertaking linemarking and slab sealing services for the Sheffield Apartments carpark, Peter & Sons were able to apply their extensive experience and product knowledge, with professionalism, achieving a high quality of workmanship.

The Peter & Sons team headed by Managing Director, Peter Kovic, offer a full range of services for commercial, residential, warehousing and road projects. These include the supply and installation of linemarking, bollards, wheelstops, slab sealing and epoxy coatings, speed humps, and height bars.

The company are also an endorsed supplier and installer of Safe Direction's 'Rhino-Stop Vehicle Impact Barrier Solutions'. Developed in Australia by Safe Direction and is Australian owned and Australian manufactured, the 'RHINO-STOP' range complies to government and industry standards and can be customised to each clients specific needs.

Offering comprehensive carpark packages for cleaning, linemarking, metalwork and signage, Peter & Sons are able to accommodate all their clients carparking needs.

For more information contact Peter & Sons Pty Ltd, 4 Helena Road, Minto Heights NSW 2566, mobile (Peter) 0412 241 406, mobile (Alex) 0439 404 259, email pkovic@mail.com



SETTING THE TONE

Sydney based Australian Cladding Specialists (ACS) supplied and installed the cladding used to create the Sheffield Apartments' architecturally designed, sleek appearance.

"At Sheffield we supplied and installed approximately 3,500m of Equitone, in four different colours and textures using Tectiva in 'White' and 'Mid-way' as well as Natura in 'Charcoal' and 'Light Grey'," explained Director, Carsten Prien.

ACS commenced work onsite at Sheffield in 2017 using Equitone on both towers. "It was a pleasure to take on the Sheffield contract and to work with St Hillier's as the main contractor," Carsten said. "Although we are a relatively new business, established only three years ago, our team of professionals, installers and factory employees have a wealth of experience."

The project has already sparked great interest in the Equitone product. "We've received many calls for various cladding projects expressing interest in Equitone. It meets all fire regulations and since the reforms made to these in 2016, it's a product in high demand. Due to the fact we are a recognised supplier/installer of Equitone, we can be trusted to economically and safely install the product on any sites. We continuously receive calls of interest and welcome all queries in this regard."



Australian Cladding Specialists supply and install most commercial cladding systems and pride themselves on delivering quality products on time and within budget.

Their projects to date are nationwide and include the Taiga Residence and the Savannah Development at Wentworth Point, both in New South Wales.

For more information contact Australian Cladding Specialists, phone 1300 930 889, website www.aucs.com.au



NEED BUILDERS, CONSULTANTS,
SUBBIES OR PRODUCTS?

OzContractor.com.au

Australia's Major Construction Search Engine

FREE TO USE
OVER 10,000 LISTINGS
MAJOR CONSTRUCTION SPECIFIC
MORE COMPANIES ADDED DAILY

Builder

| state

| post code



Architect
Consultants
Interior Designers
Construction Companies
Building Associations
Engineers
Surveyors
more...

www.OzContractor.com.au

Registration: 12 months: \$99 (+gst)/36 months: \$249 (+gst)

To be listed email: Company Name, Address, Phone/Fax, Website, Email Address & Company Type to:
E: info@ozcontractor.com.au



ELEGANT SIMPLICITY

In supplying all shower screens to main bathrooms and ensuites of the 214-apartment complex, Mitchell's Glass Works used their popular fully frameless shower screen panels.

The frameless shower screen panels feature a slimline 20mm wall channel that can be mounted straight to the wall or recessed into the tiles. The exposed polished glass edges, creates the illusion of space, and the finished look blends seamlessly into the overall modern design of the apartments.

"To be awarded this Sydney based project was very pleasing for a small, Canberra based company like us," said Director, Megan Haylock. "Taking on such a large project was significantly challenging from the outset given our small team of only seven."

The work was overseen by two of Mitchell's Glass Works tradesmen, who commuted back and forth to Sydney on a regular basis to oversee the project, it was delivered effectively, on time and on budget.

Mitchell's Glass Works Pty Ltd are a family owned and operated business and have been running since 1959. Their glazing expertise extends from shower screens, splashbacks, mirrors, wardrobe doors

and balustrades. Their project capacity extends from commercial to one on one residential solutions, where a client can order glass cut to size or schedule a visit from a tradesman to discuss options.

The company are very proud of their involvement on all their projects, which include Malabar Apartments, (Dickson), Kingsborough Apartments, (Kingston) and The Arbour Townhouses, (Woden).

For more information contact Mitchell's Glass Works, 4 Geelong Street, Fyshwick ACT 2609, phone 02 6280 6111, fax 02 6280 5743, email sales@mitchellsglass.com.au, website www.mitchellsglass.com.au