

SHAPING THE FUTURE OF MENTAL HEALTH CARE

CLIENT : Central Adelaide Local Health Network (CALHN) supported by
Department for Infrastructure and Transport (DIT) and SA Health
MAIN CONSTRUCTION COMPANY : Hindmarsh Construction
ARCHITECT : Cheesman Architects



The Queen Elizabeth Hospital (TQEH) Mental Health Rehabilitation Facility is a 24-bed, purpose-built centre delivering recovery-focused care in a dignified, therapeutic environment. Featuring natural light, landscaped courtyards, and anti-ligature design, it promotes safety and wellbeing. The fully electric, energy-efficient facility enhances South Australia's mental health capacity and sets a benchmark in collaborative, sustainable healthcare delivery.

Constructed by Hindmarsh Construction on behalf of Central Adelaide Local Health Network (CALHN) and supported by Department for Infrastructure and Transport (DIT) and SA Health, The Queen Elizabeth Hospital Mental Health Rehabilitation Facility marks a new chapter in how specialist mental health services are delivered in South Australia.

The project forms part of a broader state government initiative to increase mental health capacity and reduce pressure on emergency departments and acute wards. The Queen Elizabeth Hospital services a population of more than 250,000 residents across western Adelaide, and the addition of specialist rehabilitation beds helps to create better service flow across the region's mental health system.

Designed to provide longer-term, recovery-focused care, the two-storey, 24-bed facility offers a calm, residential environment where patients can safely transition from acute care to greater independence. Single bedrooms with ensuites, communal living areas, therapy rooms,

and landscaped courtyards have been carefully arranged to encourage connection, dignity, and healing.

Delivering mental health infrastructure of this nature demanded a nuanced and collaborative approach. Hindmarsh worked closely with CALHN clinical teams, specialist consultants, governance stakeholders, and consumer representatives — including the Office of the Chief Psychiatrist, Infection Control, and union representatives — to ensure the spaces supported both therapeutic goals and stringent clinical requirements.

Anti-ligature fixtures, passive observation lines, and acoustic controls were carefully integrated, while periodic inspections, sample submissions, and staged sign-offs ensured every built element met clinical, operational, and functional standards.

To refine the design, a prototype bedroom was constructed early in the process, enabling clinical teams to test layouts, materials, and

safety features under real-world conditions. Insights gained directly informed the final fit-out demonstrating a practical and collaborative approach to stakeholder engagement and user-led design.

Specialist furniture, fixtures, and clinical equipment was sourced internationally. Key imported elements included Britplas anti-ligature bedroom window systems from the United Kingdom, Hipac specialist door hardware from the UK, Qinera sensory modulation equipment from Spain, and oversized Otis lift components from multiple international manufacturing centres.

Local suppliers produced essential custom components such as Crown Furniture beds and side tables, and entirely new ensuite door systems designed specifically for this project. Co-ordinating procurement, freight, customs clearance, installation sequencing, and commissioning for all of these items required detailed forward planning, risk management and close communication between Hindmarsh, suppliers, and CALHN stakeholders.

Given the complexity of mental health care, the architectural and interior planning elements of the project carry significant weight. Circulation pathways, sight-lines, acoustic control, privacy, and access to outdoor space were all carefully balanced to promote calmness and connection rather than confinement, with two secure courtyards providing patient-



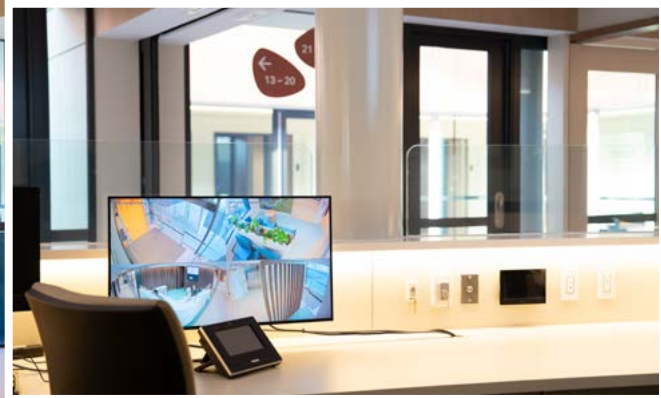
controlled access to outdoor recreation. Sustainability, durability, and lifecycle considerations were integrated throughout, with finishes selected for longevity in high-use environments while maintaining a contemporary, warm, and human-scaled atmosphere consistent with current therapeutic design philosophies.

Although the facility sits across the road from the main TQEH campus, it needed to integrate fully into the hospital's existing operational and digital networks, introducing significant technical complexity to the

Below Hindmarsh Construction delivered complex, technically sophisticated healthcare infrastructure, combining stakeholder collaboration, and innovative, patient-focused design.



Below Humphreys Electrical delivered compliant, anti-ligature, and bespoke electrical systems at the Queen Elizabeth Hospital Mental Health Facility.



construction programme. Services integration included linking fibre networks, security, access control, CCTV, clinical communications and mobile duress systems into CALHN’s broader digital and emergency response platforms.

The mechanical services and fire systems were configured so that each wing can shut down independently during an incident while the rest of the facility remains operational, demonstrating a high level of controlled systems integration. Backup generator and UPS systems were tied into the site-wide power resilience framework, further supporting continuity of care.

As mental health service models continue to evolve nationally, infrastructure is increasingly being shaped around recovery-oriented practice rather than solely crisis intervention. The new facility at The Queen Elizabeth Hospital reflects that shift: providing time, space, and specialist support for people to rebuild capacity and confidence before returning to the community.

For Hindmarsh, the project underscores its role as a national contractor capable of delivering technically complex social infrastructure that directly contributes to community wellbeing. It is an example of thoughtful construction shaping not only the built environment, but also the quality of care that environment enables.

For more information contact Hindmarsh Construction, phone 08 8228 4188, email enquiries@hindmarsh.com.au, website hindmarsh.com.au

TECHNICAL PRECISION AND SAFETY IN HEALTHCARE ELECTRICAL INSTALLATIONS

The delivery of the new TQEH Mental Health Rehabilitation Service in Adelaide required a specialist approach to electrical and security systems, with a strong focus on patient safety. Humphreys Electrical was entrusted with this critical package, bringing technical expertise and industry qualifications to one of South Australia’s most significant healthcare projects.

“Our scope was the complete electrical package,” explained Nick Doyle, Construction Manager at Humphreys Electrical. “That included electrical, communications, security and access systems, CCTV, mobile duress, AV, and generator power.”

“Because it was a mental health facility, all systems had to be anti-ligature compliant,” Nick explained. “We also introduced new door-top alarm systems as part of the safety package, ensuring the highest level of protection for patients and staff.” These bespoke solutions required close co-ordination with the client and design teams to achieve compliance without compromising functionality.

The company’s DIT CAT E2 qualification further reinforced its ability to manage high-level electrical and communication installations in healthcare environments.

The project was technically complex, yet Humphreys Electrical ensured smooth delivery. “This project was very complex, but delivered on time and on budget,” Nick said. “We’re proud to have played a role in delivering a facility that prioritises safety, security, and care.”

Humphreys Electrical’s contribution to TQEH Mental Health Rehabilitation Service continues its legacy of delivering high-quality electrical solutions across diverse sectors. Other recent projects include 200 East Terrace, Findon Technical College, Queen Elizabeth Hospital – Fast Track Beds, and Resthaven Aged Care, all of which showcase the company’s versatility and reliability.

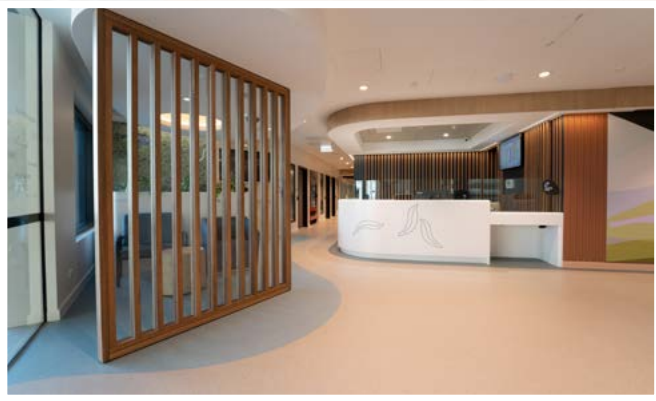
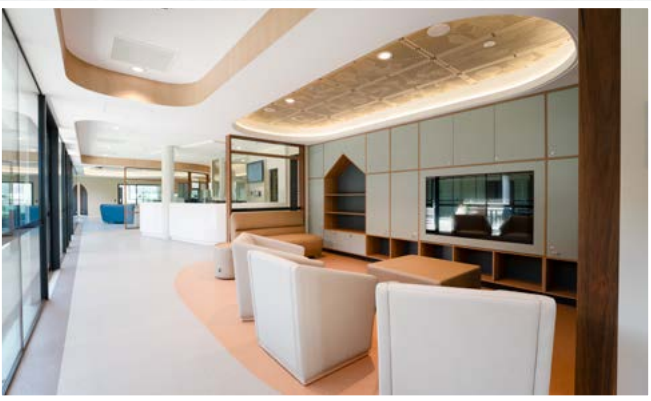
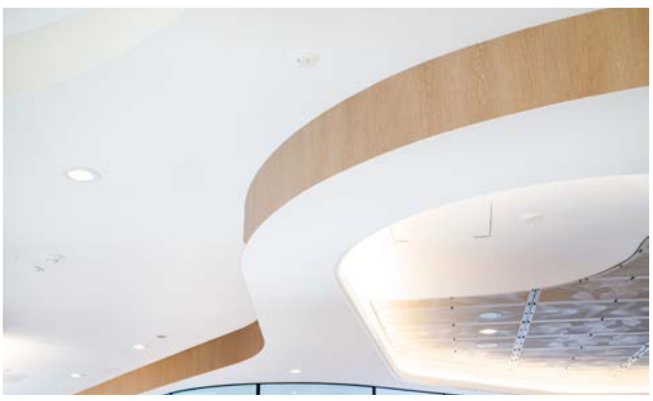
With proven capability in complex healthcare projects, Humphreys Electrical has cemented its reputation as a trusted partner for delivering innovative, compliant, and reliable electrical solutions across South Australia.

For more information contact Humphreys Electrical, Unit 1, 360-365 Richmond Road, Netley SA 5037, phone 08 8357 3298, email admin@heservices.au, website www.humphreys-electrical.com.au

Below Bespoke Contractors delivered precise wall and ceiling works at Queen Elizabeth Hospital, balancing compliance, safety, and design.



Below JFloors delivered durable, safe, and design-focused flooring at Queen Elizabeth Hospital Mental Health Facility.



INTERIOR DETAILING THAT SUPPORTS WELLBEING AND COMPLIANCE

Mental health facilities demand more than quality finishes, they require precision detailing that directly supports safety and wellbeing. At the TQEH Mental Health Rehabilitation Service in Adelaide, Bespoke Contractors brought this expertise to life, delivering interiors that balanced performance, compliance, and design sensitivity, reinforcing their reputation as a trusted partner for complex builds

“Our scope of work for this project involved all the structural and non-structural timber framing, plasterboard linings and suspended ceilings,” explained Eddie Wignall. “Our team also supplied and installed both timber and metal feature ceiling linings, ensuring the project met the high standards expected for a healthcare environment.”

The facility’s design demanded not only quality finishes but also strict compliance with anti-ligature safety standards. This created unique challenges during delivery.

The project involved several significant challenges for us, such as tight construction timeframes, complex design detailing, and the precise execution of curved ceilings, openings, and recessed ensuite doors,” Eddie explained. “Achieving compliance with the strict anti-ligature

standards required in mental health facilities demanded exceptional attention to detail and seamless coordination between all trades and the broader project team.

Bespoke Contractors is well-versed in projects that call for both technical capability and design sensitivity. Beyond healthcare, the company’s portfolio spans education and retail, with recent work including Findon Technical college, Immanuel college and currently North Park Shopping Centre. Across all sectors, the team brings the same focus on delivering high-quality finishes tailored to each client’s needs.

For Bespoke Contractors, the TQEH Mental Health Rehabilitation Service was a rewarding challenge. “Being involved in such an important facility is something we’re proud of,” Eddie said. “It’s great to know that our contribution supports a safe, functional, and welcoming environment for the people who will use it.”

For more information contact Bespoke Contractors, 104 Hardys Road, Torrensville SA 5031, phone 0411 845 763, website www.bespokecontractors.com.au

FLOORING THAT COMBINES SAFETY, DURABILITY, AND INTERIOR APPEAL

In high-use environments like healthcare, education, and multi-residential projects, flooring must do far more than look good, it must conform to safety, withstands constant wear, and shapes how people experience interior spaces. Since 2016, JFloors has specialised in delivering surfaces that combine durability, compliance, and aesthetic presence, ensuring each project balances technical performance with inviting, well-considered design.

For the TQEH Mental Health Rehabilitation Service, the company’s scope was extensive, with JFloors handling all flooring for the project. “Our scope included everything from floor preparation, including falls and ramping, through to product supply, installation, and wall vinyl in bathrooms,” explained Jesse Roberts, General Manager of JFloors.

“We completed full custom pattern work in all areas, including the bathrooms,” Jesse said. This not only elevated the aesthetics of the facility but also provided a durable, hygienic, and functional solution suited to a demanding healthcare environment.

Healthcare facilities bring their own challenges, with strict standards for safety and ease of maintenance. JFloors’ contribution balanced

technical performance with a design-conscious approach, ensuring the spaces are not only robust but also welcoming for staff, patients, and visitors.

With a compact but highly skilled team of seven employees, JFloors demonstrates how boutique contractors can make a big impact on complex, high-profile projects. Their collaborative approach with builders and other trades ensured that installation was seamless and delivered to program requirements.

Beyond TQEH Mental Health Rehabilitation Service, JFloors continues to expand its portfolio with projects such as Westpac Festival Tower, TQEH Fast Track Beds, and multiple residential towers.

“We’re proud to deliver flooring that combines function, design, and quality. Projects like this show what we can achieve when precision and creativity come together,” Jesse said.

For more information contact JFloors, Unit 1/20 Adam Street, Hindmarsh SA 5007, phone 0498 185 719, email sales@jfloors.com.au, website www.jfloors.com.au

